



Evolution and myTecnoalarm TCS apps

Sign up for a Tecnoalarm account



evolution



myTecnoalarm TCS

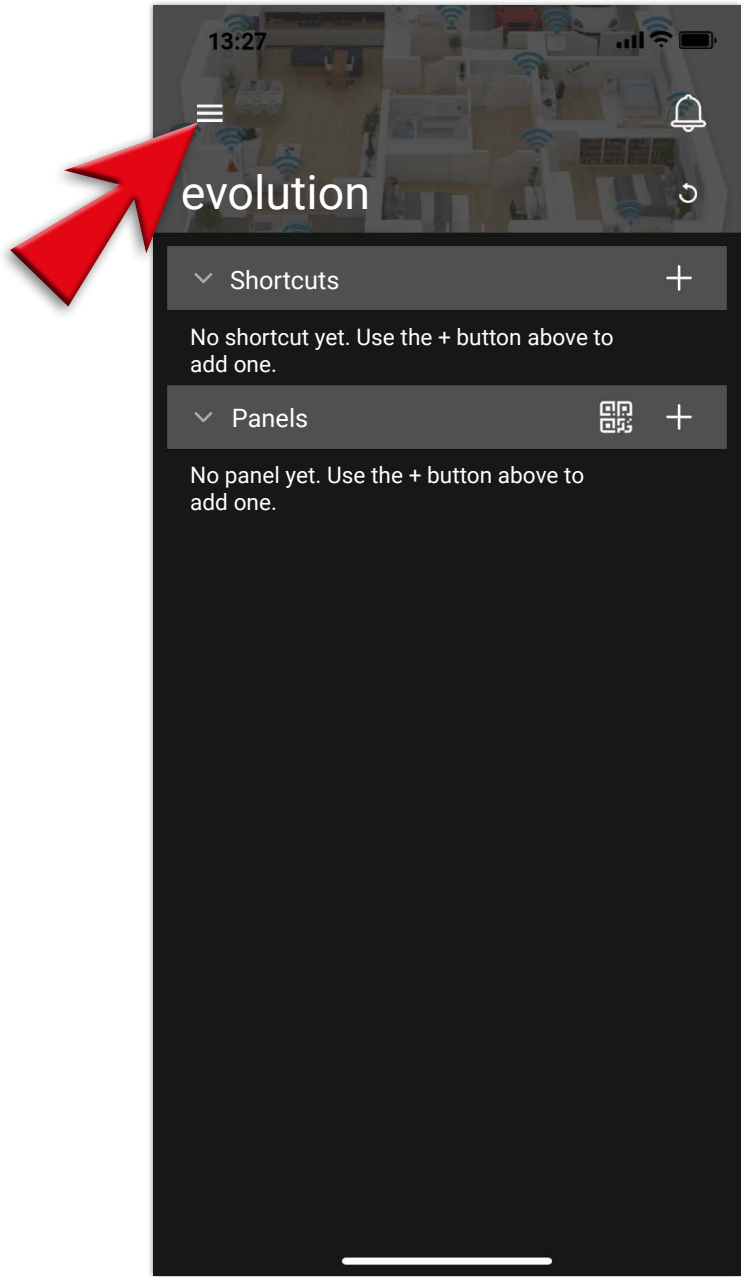
Verify that the app is installed on your device.
The following procedure is common for both apps, Evolution and myTecnoalarm TCS.

Create a Tecnoalarm account

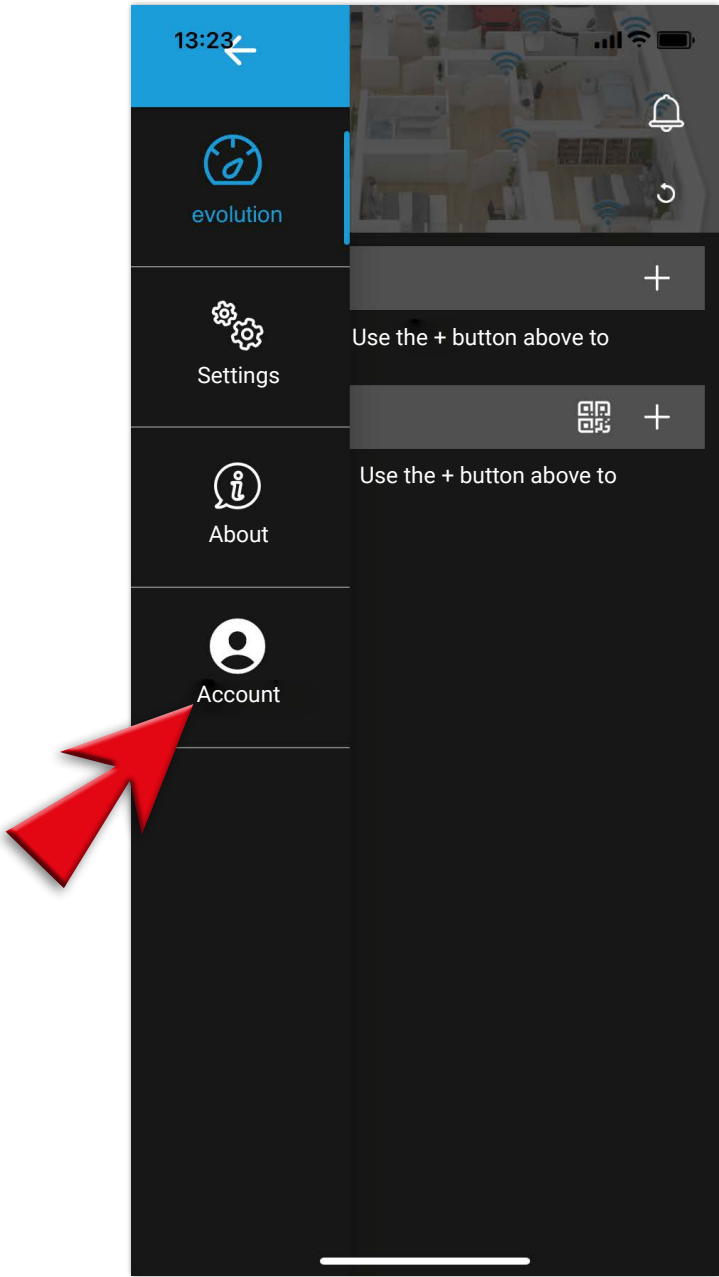
1 - Open the app



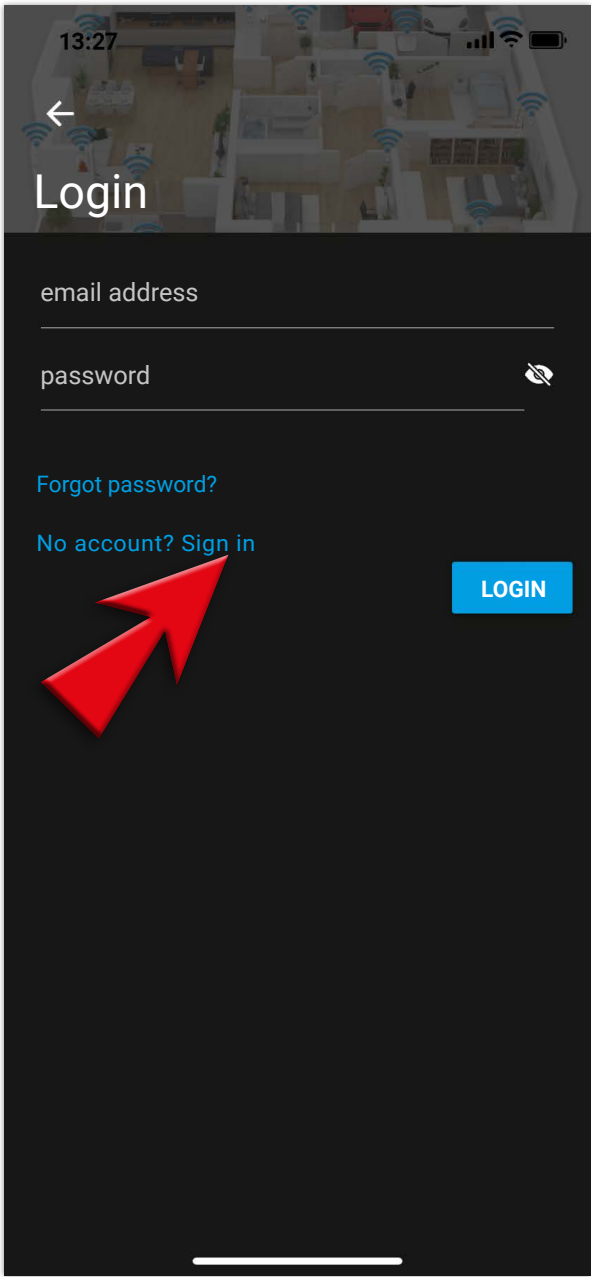
2 - Open the menu (top left)



3 - Tap on ACCOUNT

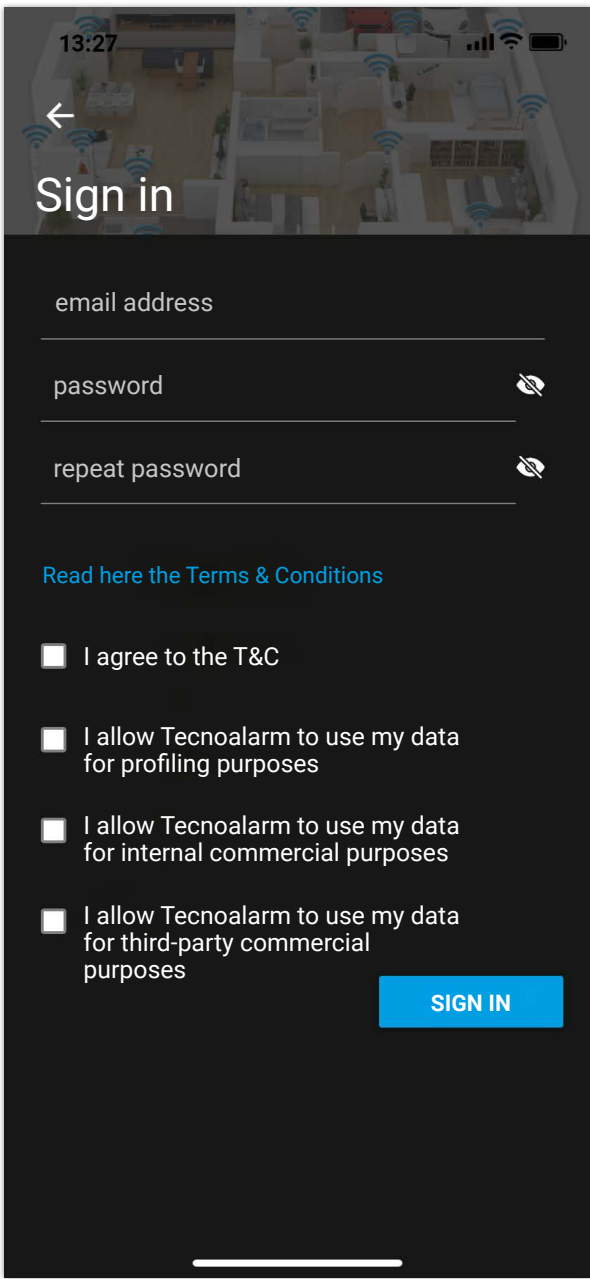


4 - Tap on SIGN IN

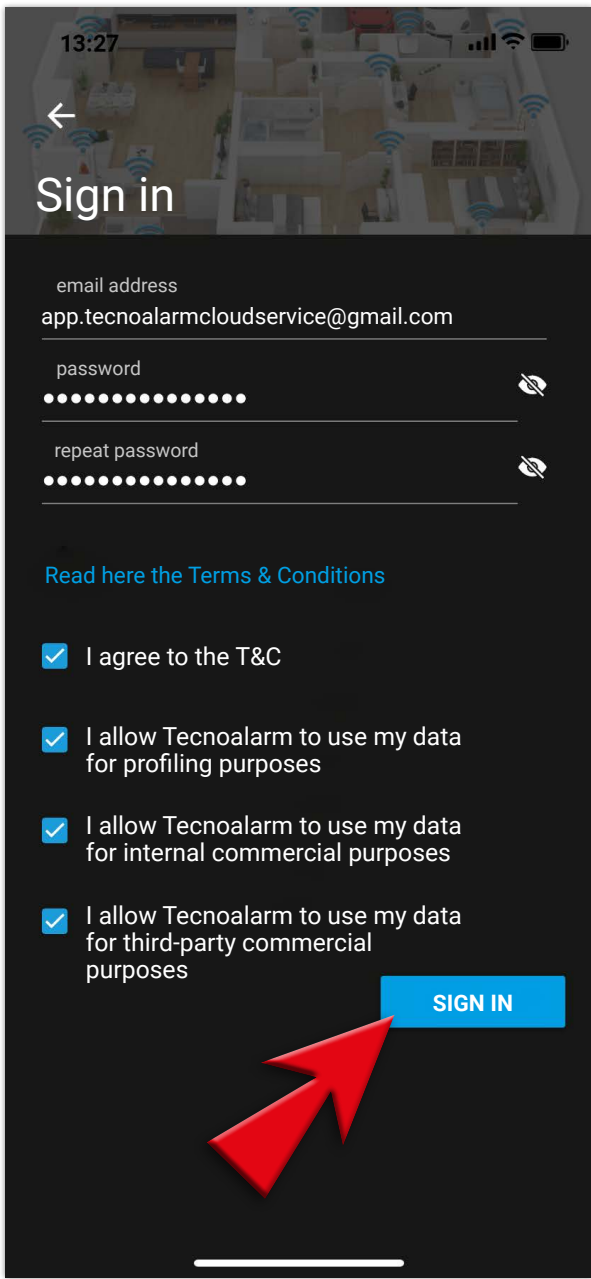


Create a Tecnoalarm account

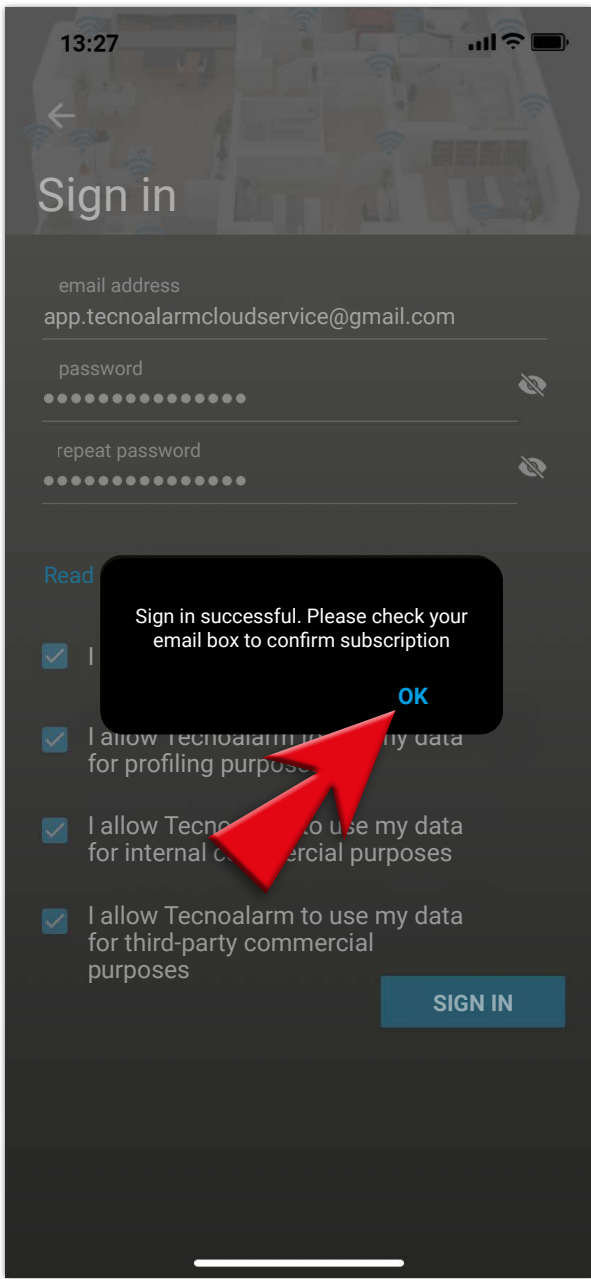
5 - Insert your email address and an 8-digit password, with at least one upper case, one lowercase, one special character or number



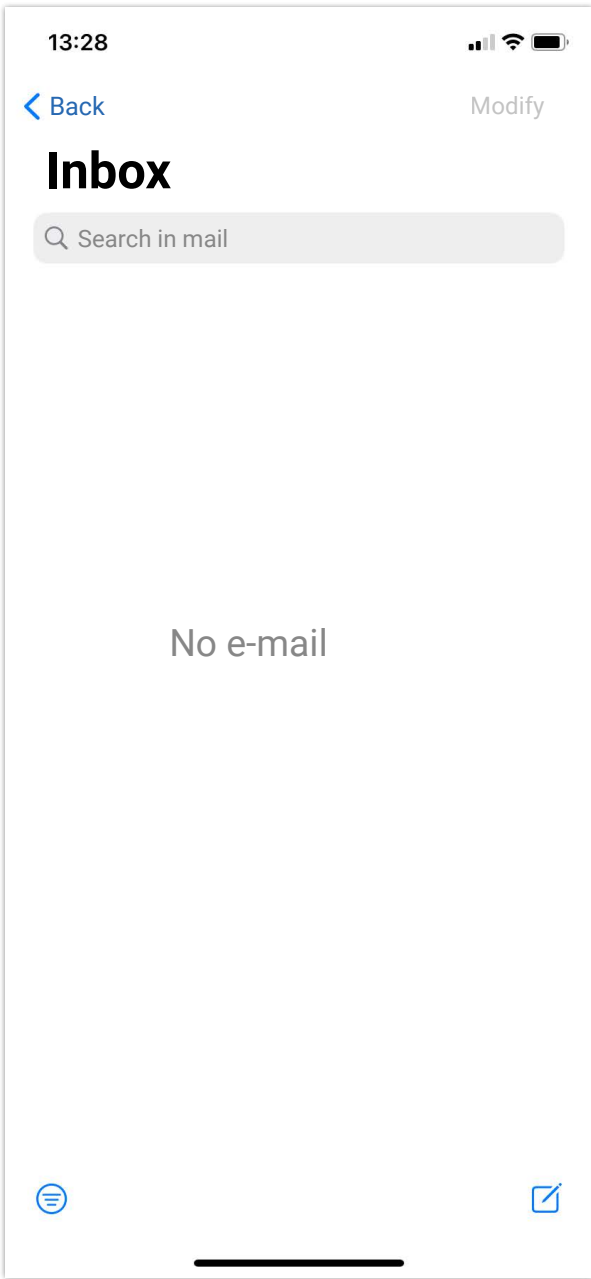
6 - Accept the terms and conditions (first check is mandatory) and tap SIGN IN



7 - Registration is complete, confirm with OK

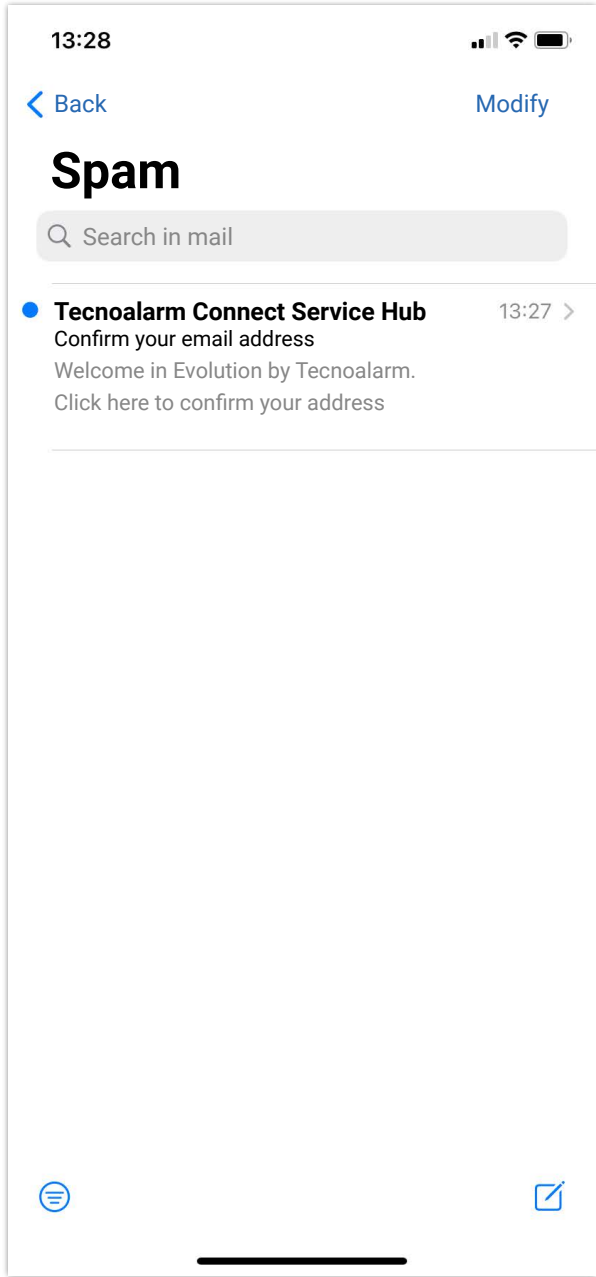


8 - Check your email box



Create a Tecnoalarm account

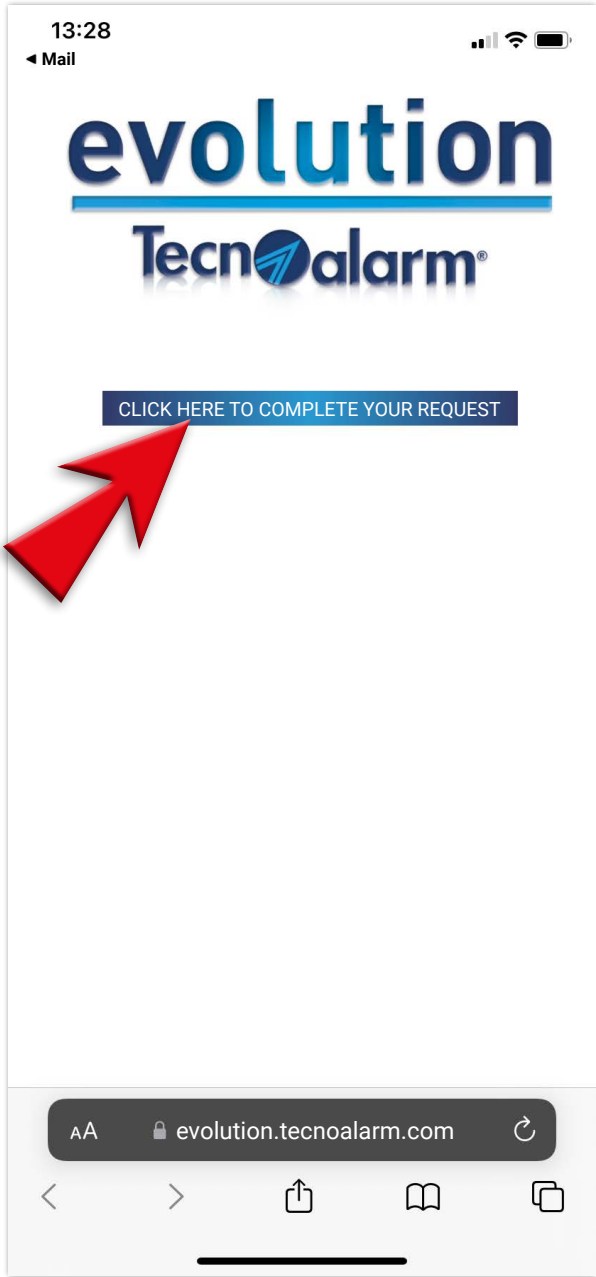
9 - If you do not receive the e-mail, check the spam folder



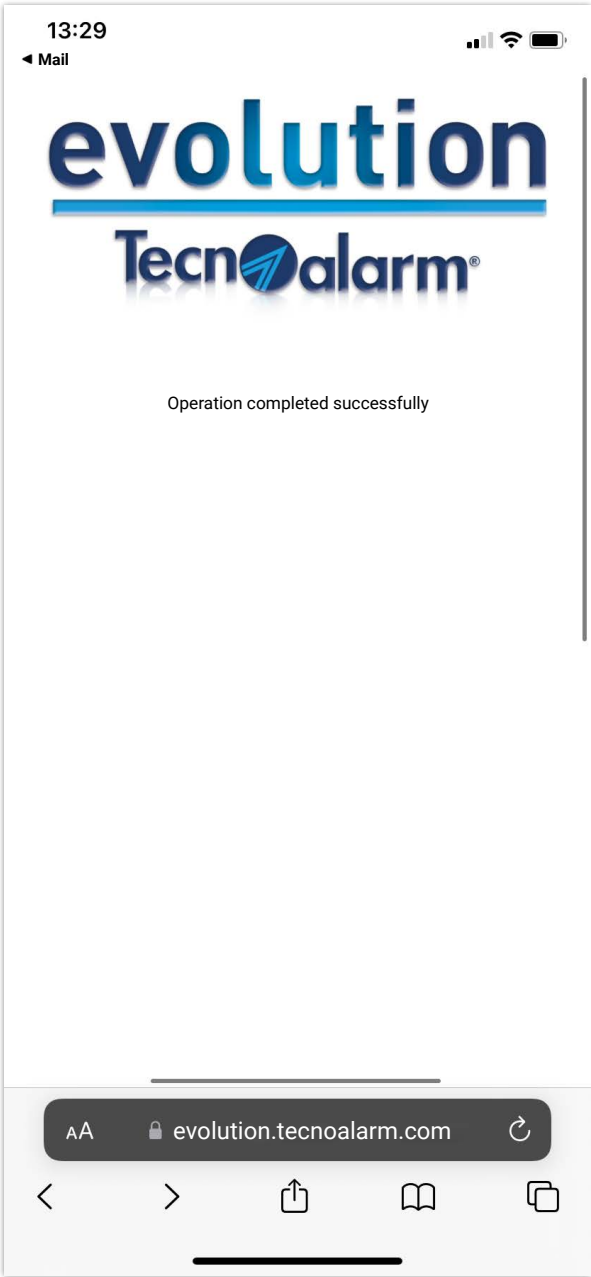
10 - Open the email and confirm your registration



11 - Tap to confirm the operation

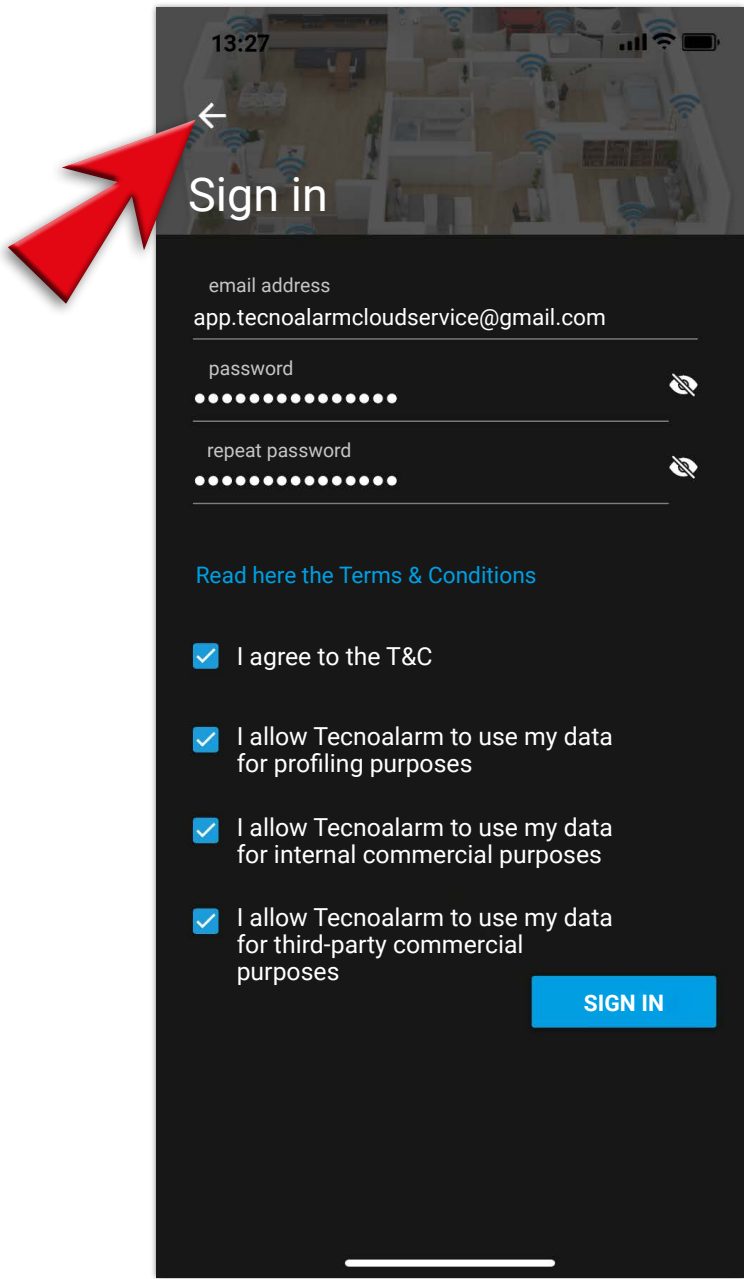


12 - The operation has been completed successfully

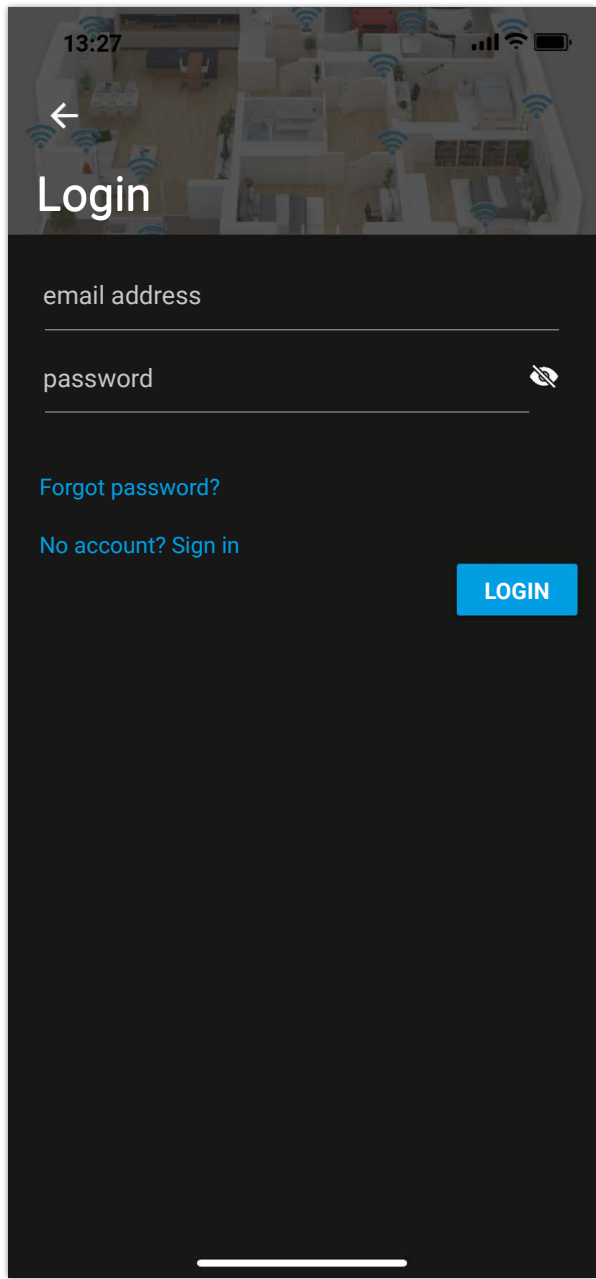


Create a Tecnoalarm account

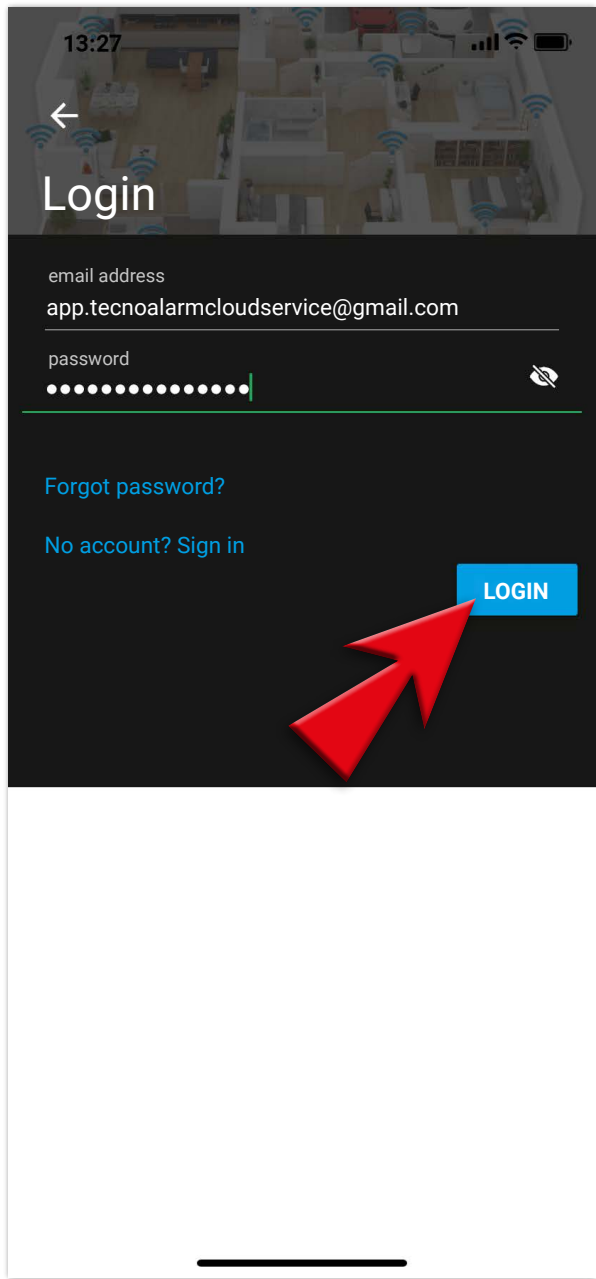
13 - Go back to the app and tap on the arrow to return to Login page



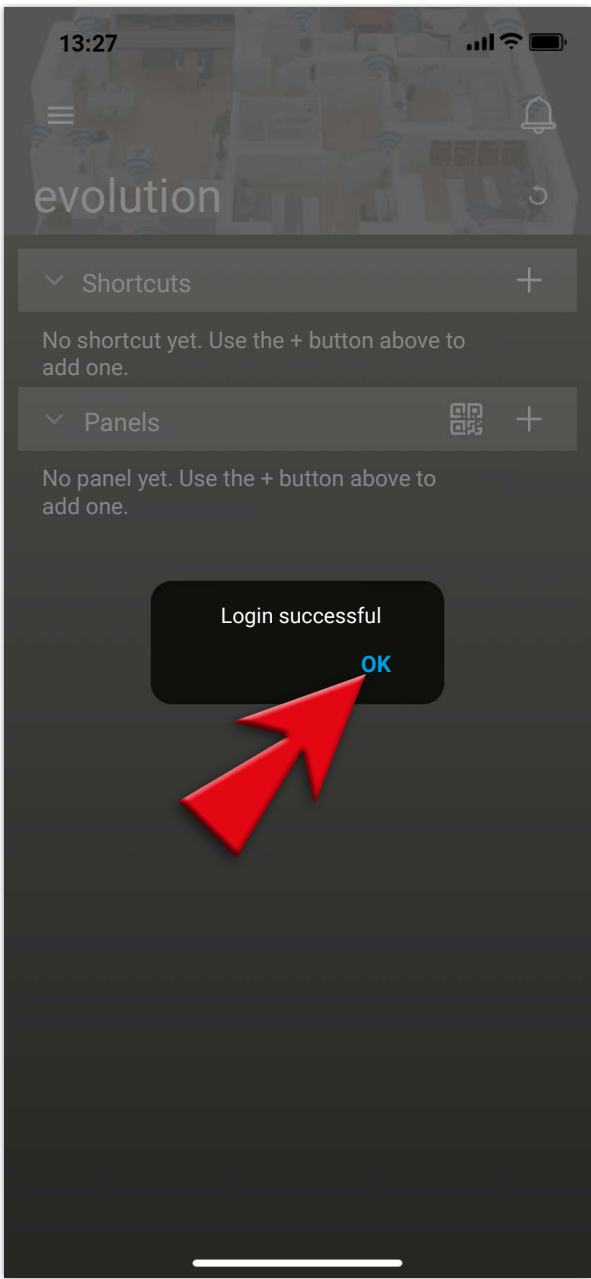
14 - Now you will need to insert the email and password used for registration



15 - Enter the email and password and tap on LOGIN



16 - Tap on OK





Evolution and myTecnoalarm TCS apps LOGOUT and LOGIN procedure



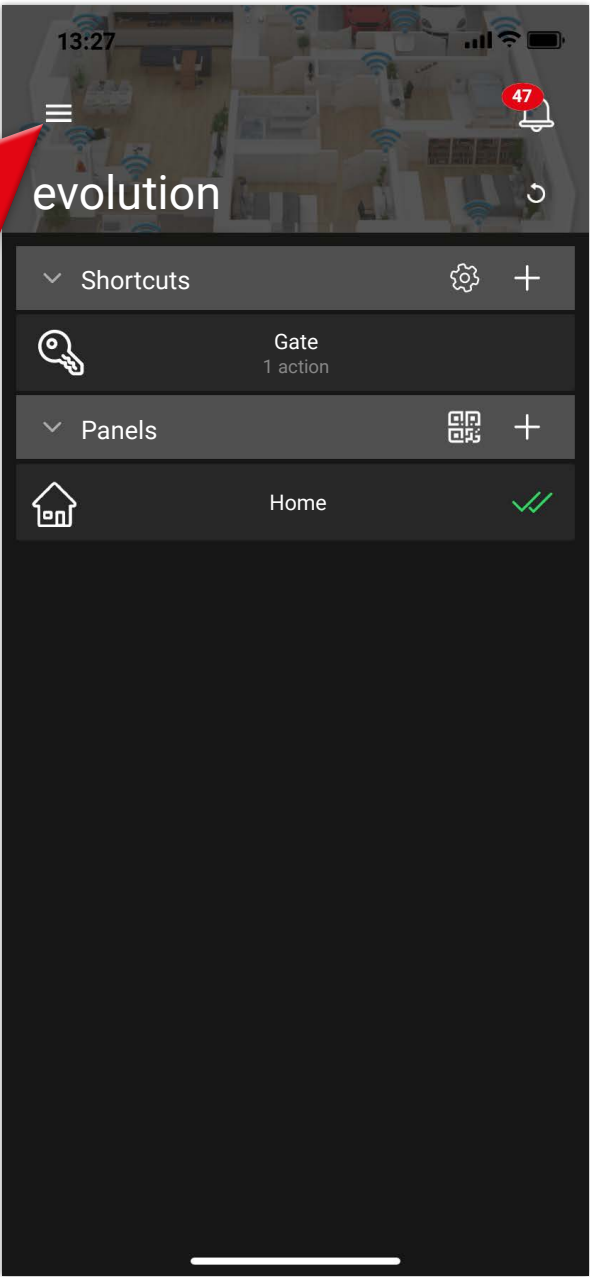
evolution



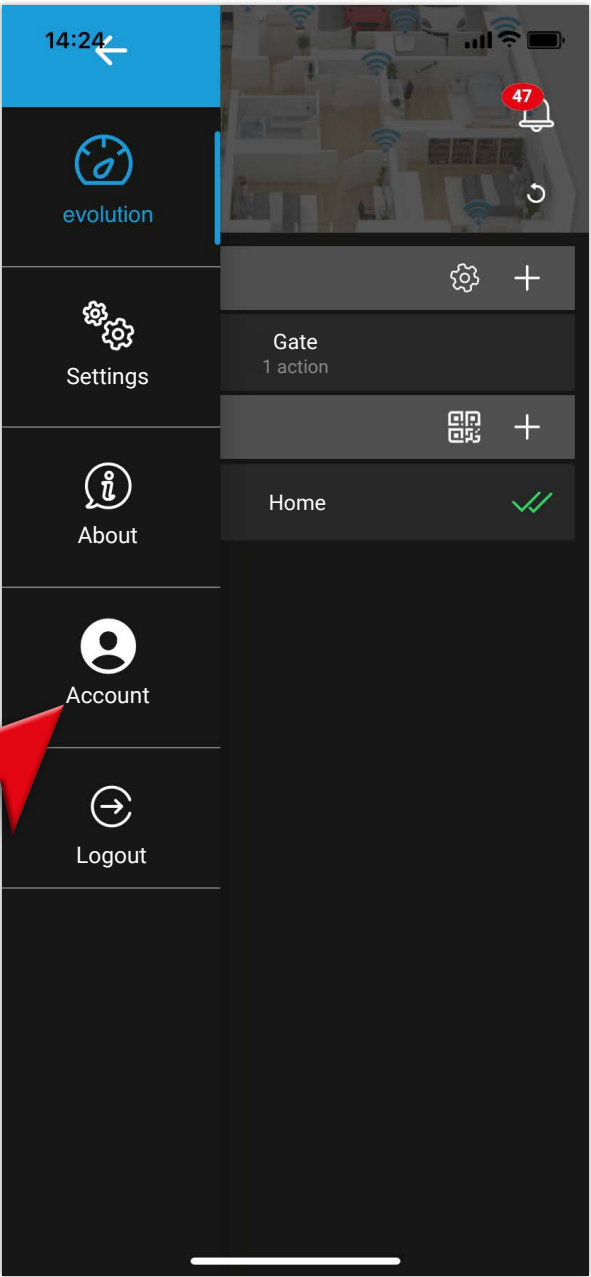
myTecnoalarm TCS

LOGOUT procedure

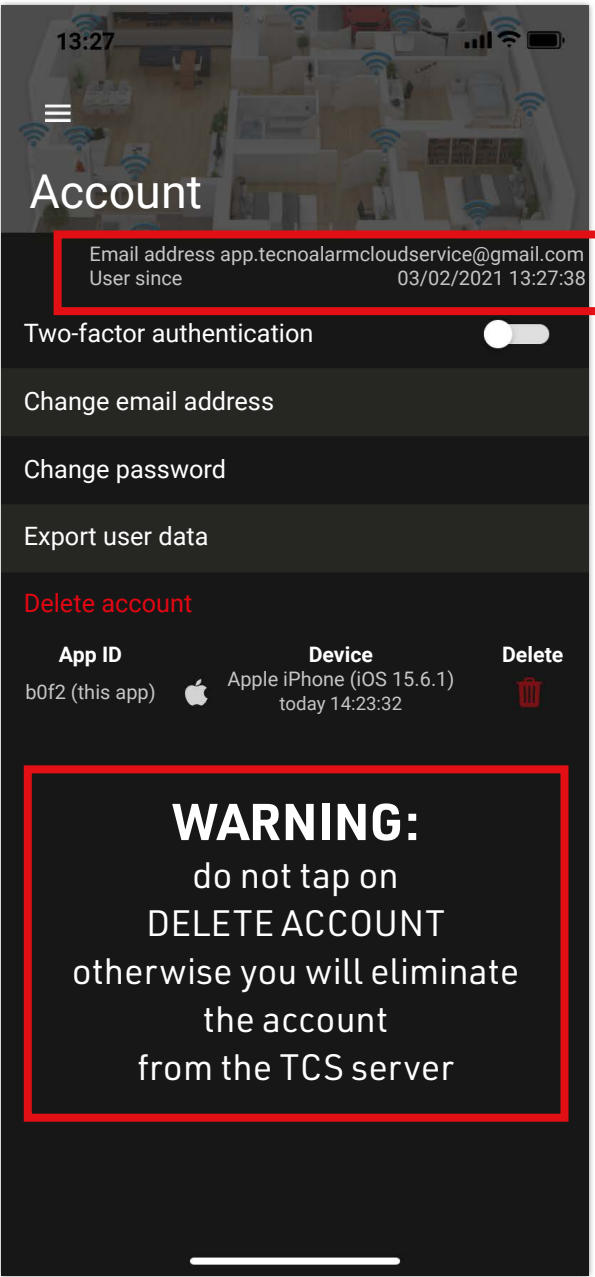
1 - For logout open the menu (top left)



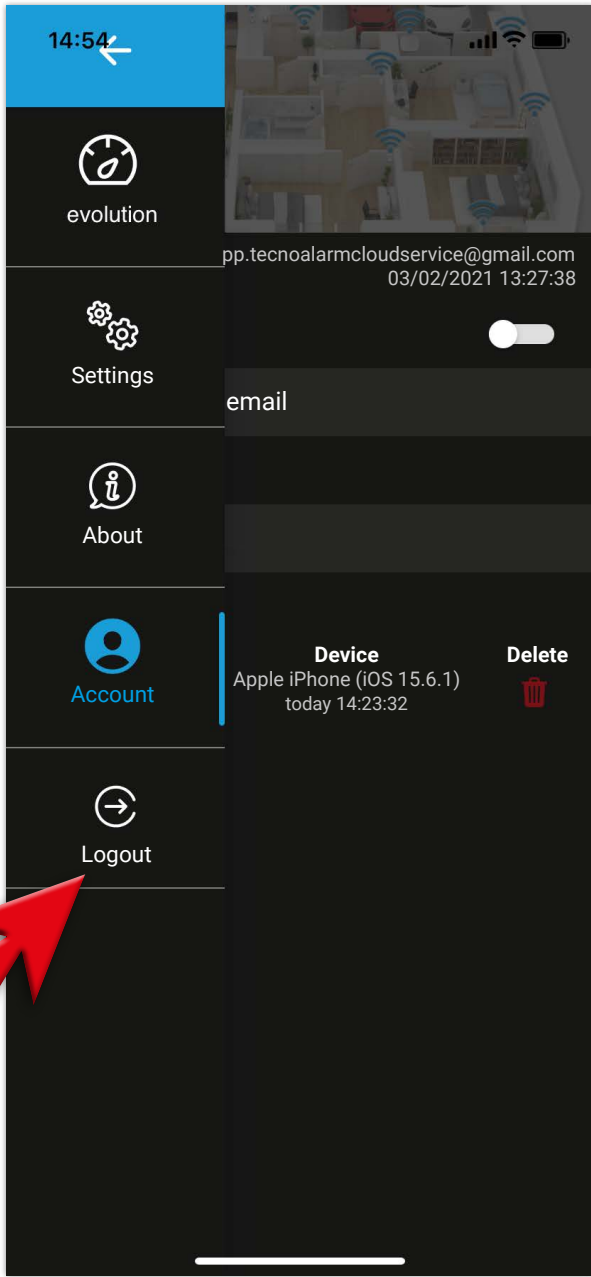
2 - Tap on ACCOUNT



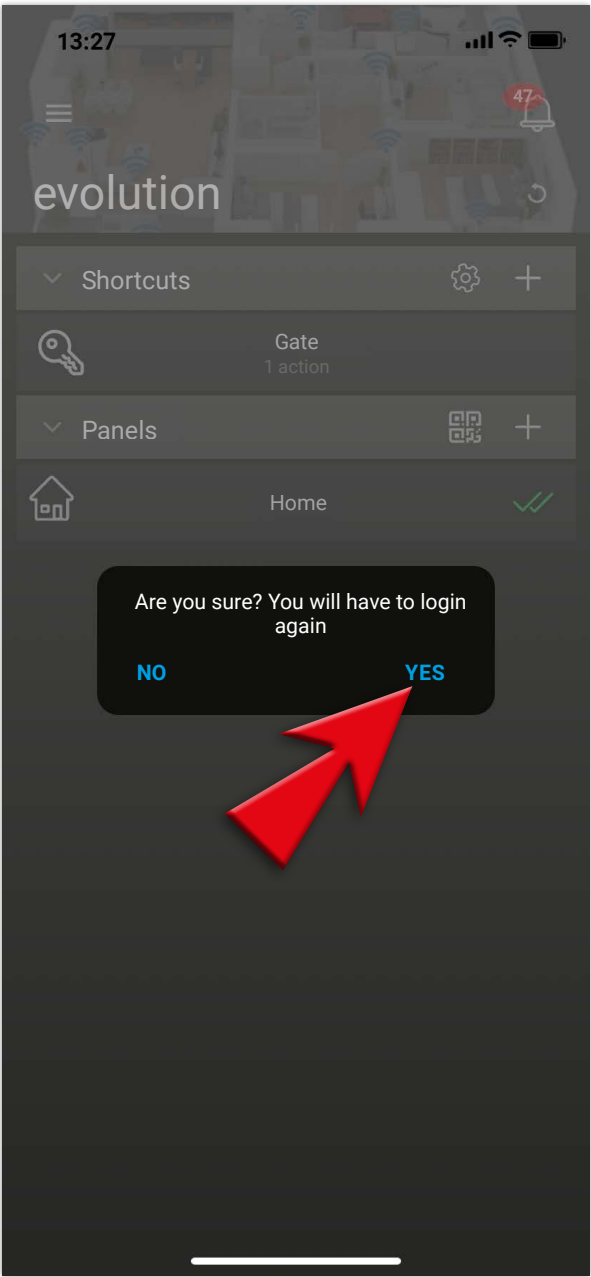
3 - Check and take note of the email used for the account, you will need it for login



4 - Tap on LOGOUT in the menu

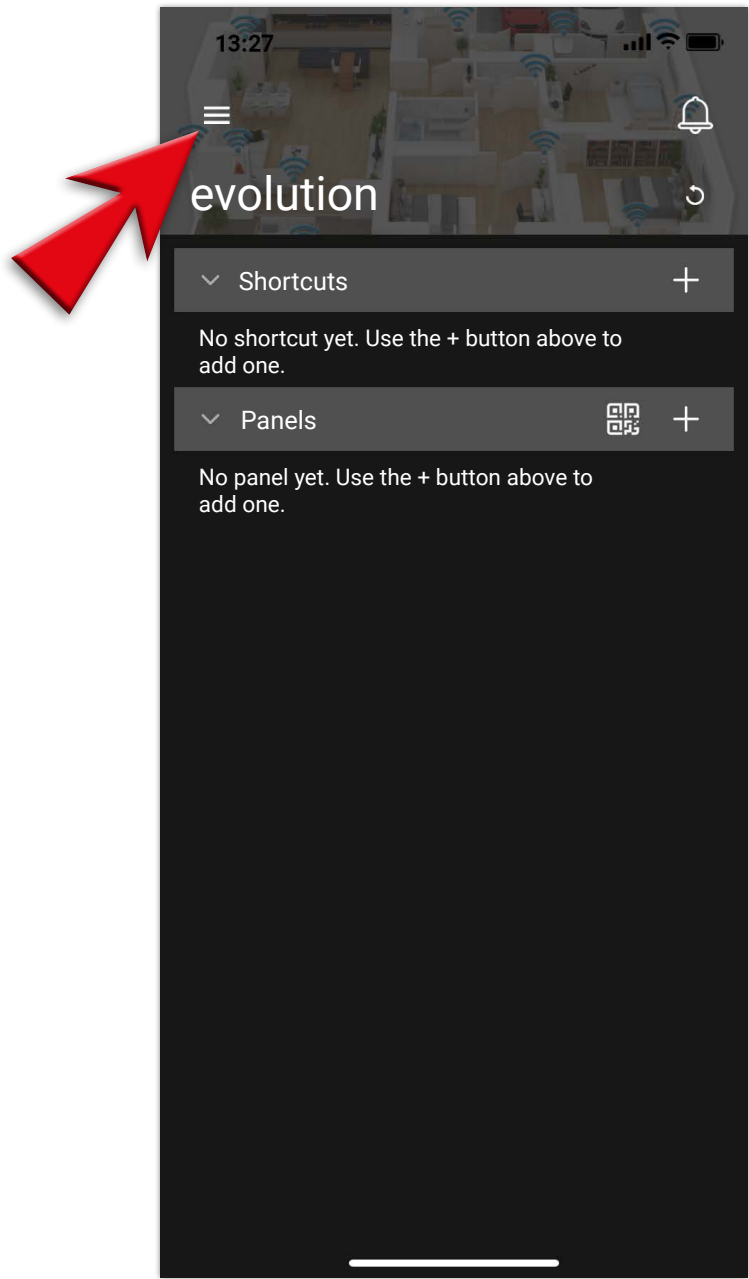


5 - Confirm LOGOUT by tapping on YES

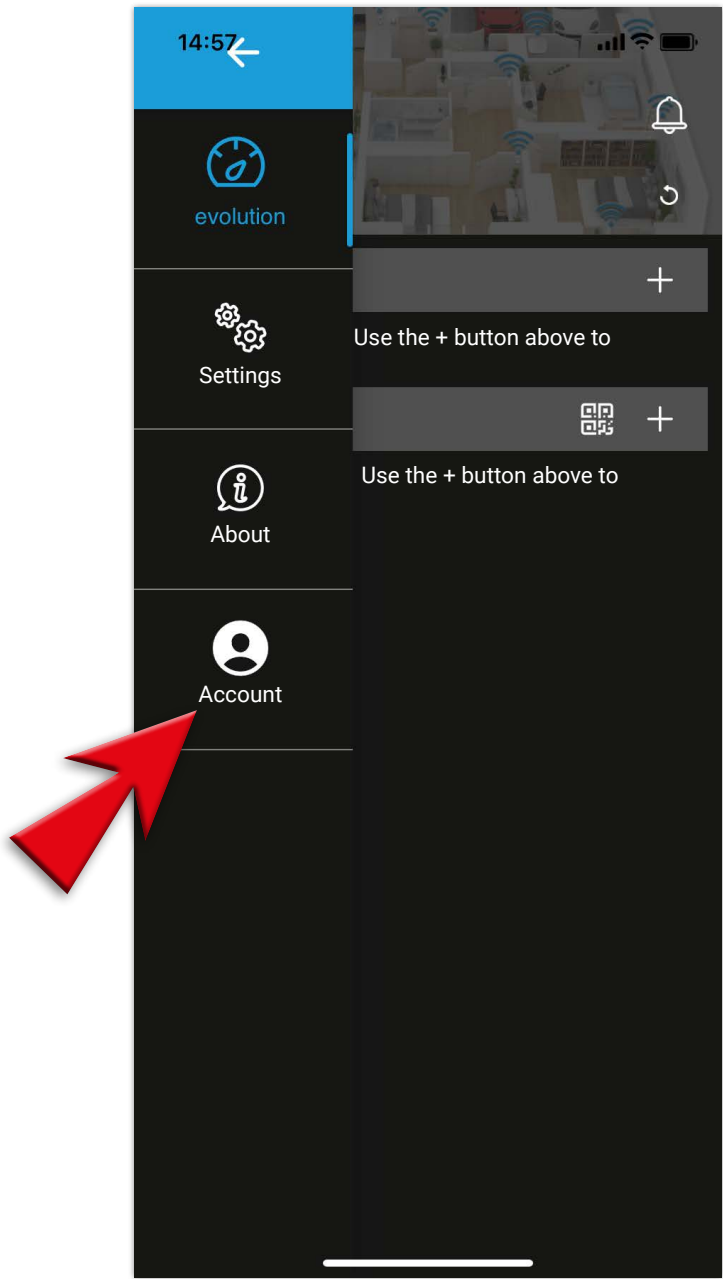


LOGIN procedure

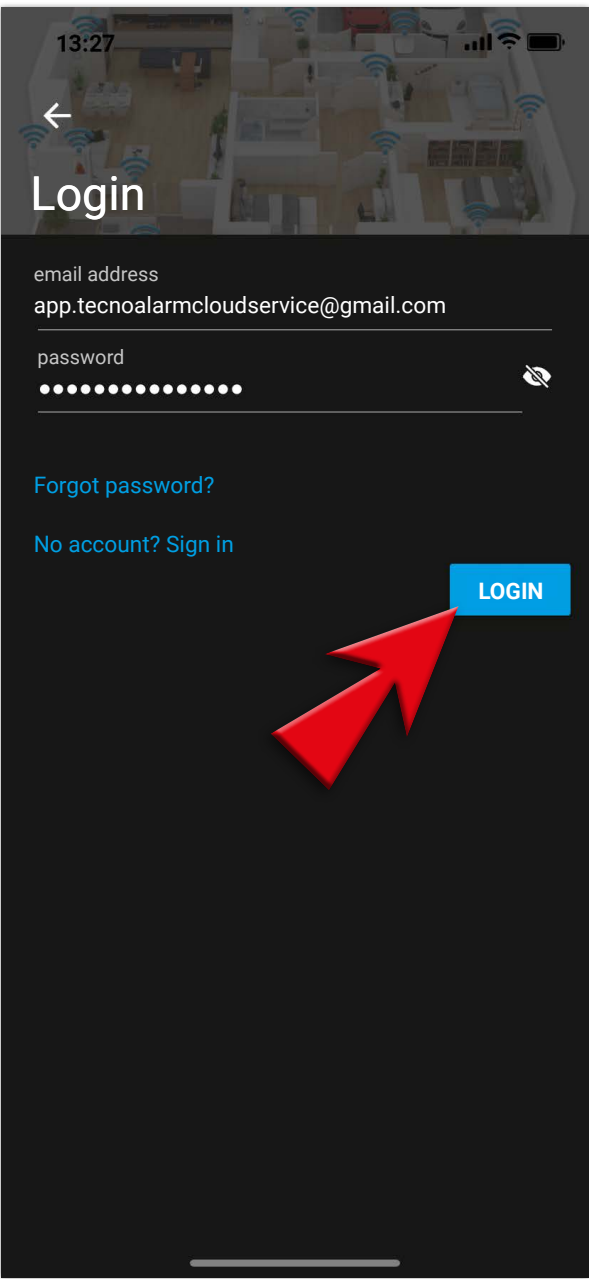
1 - Open the app
and open the menu
(top left)



2 - Tap on
ACCOUNT

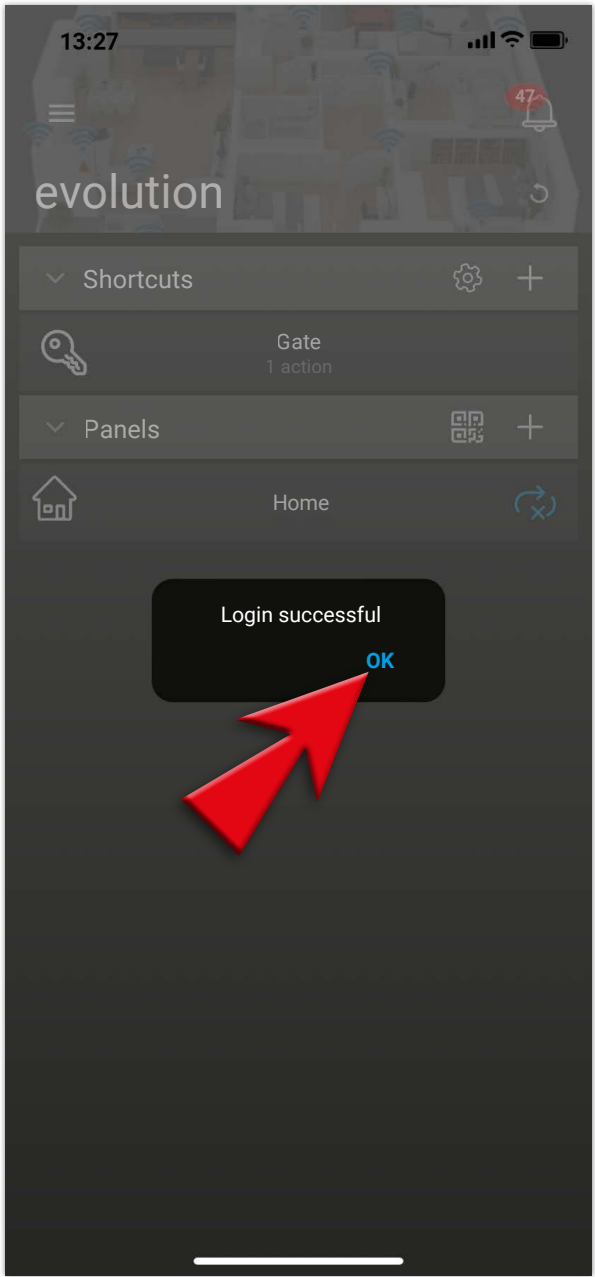


3 - Insert your
credentials
and tap on LOGIN

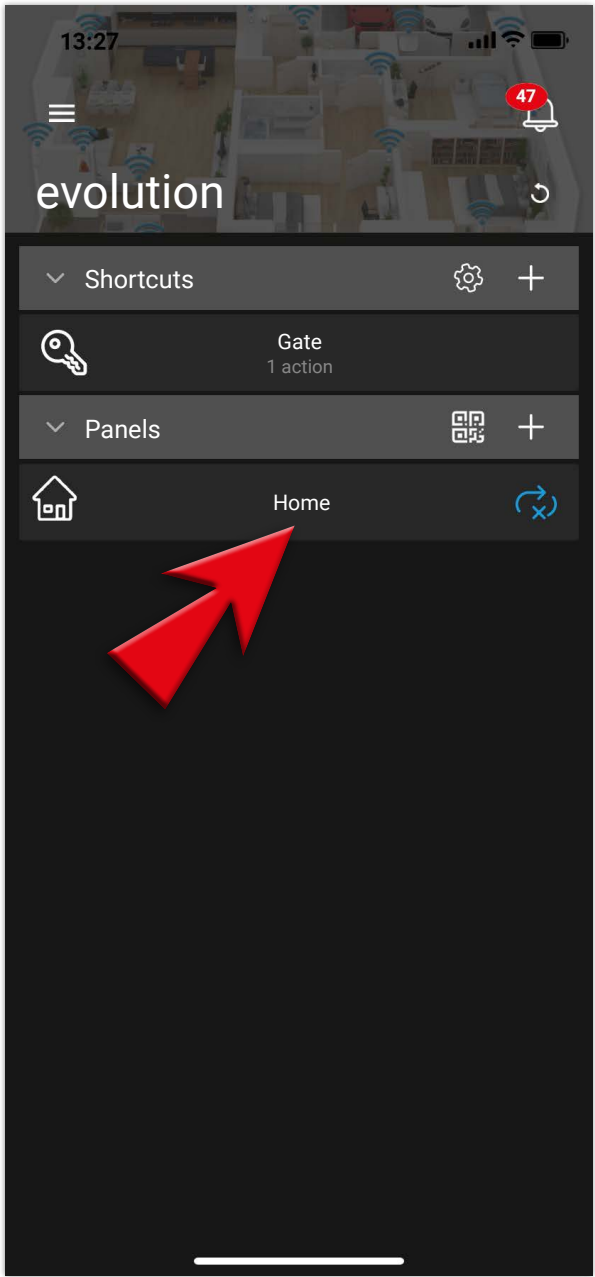


LOGIN procedure

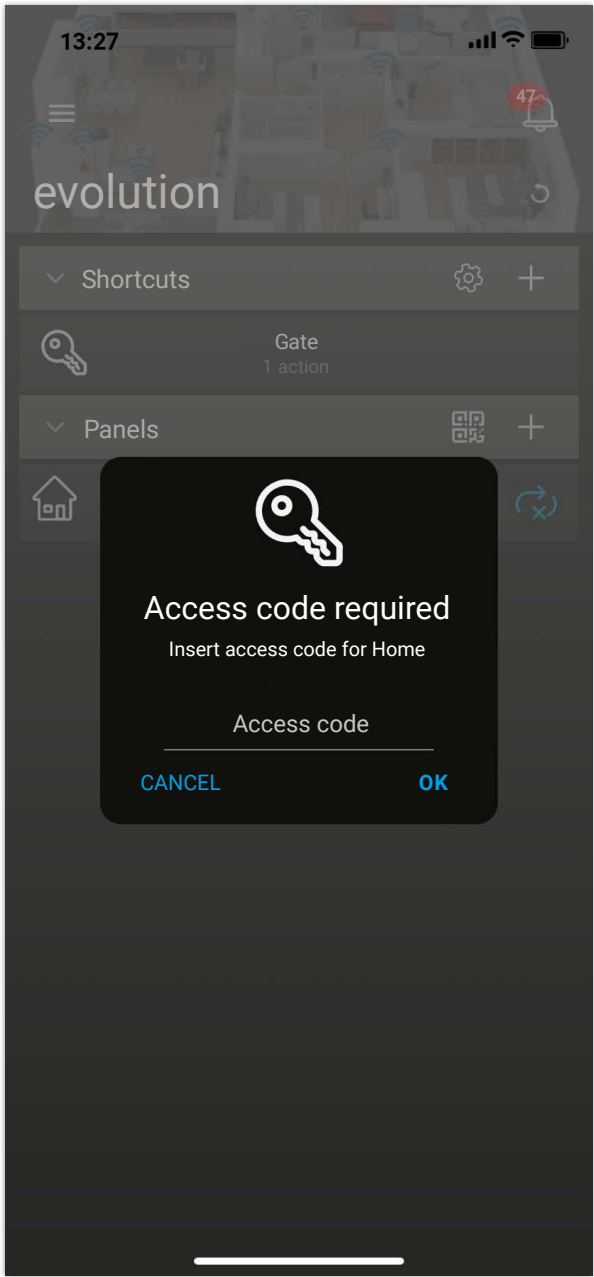
4 - Login successful, tap on OK



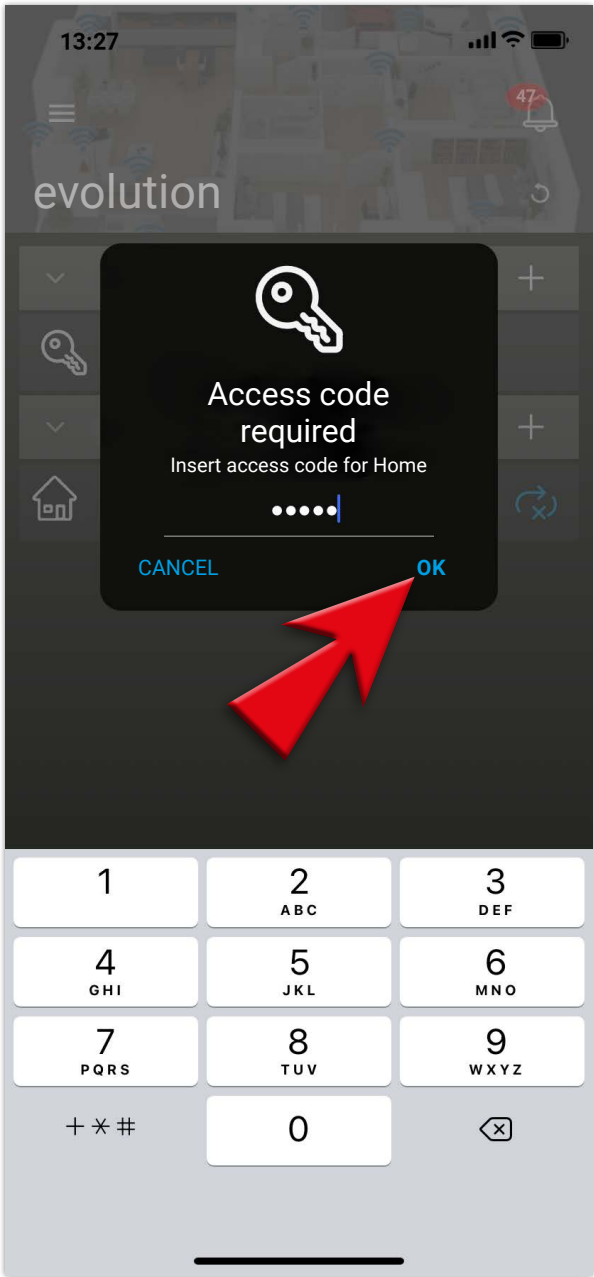
5 - Chose the control panel



6 - Enter the access code used for this control panel

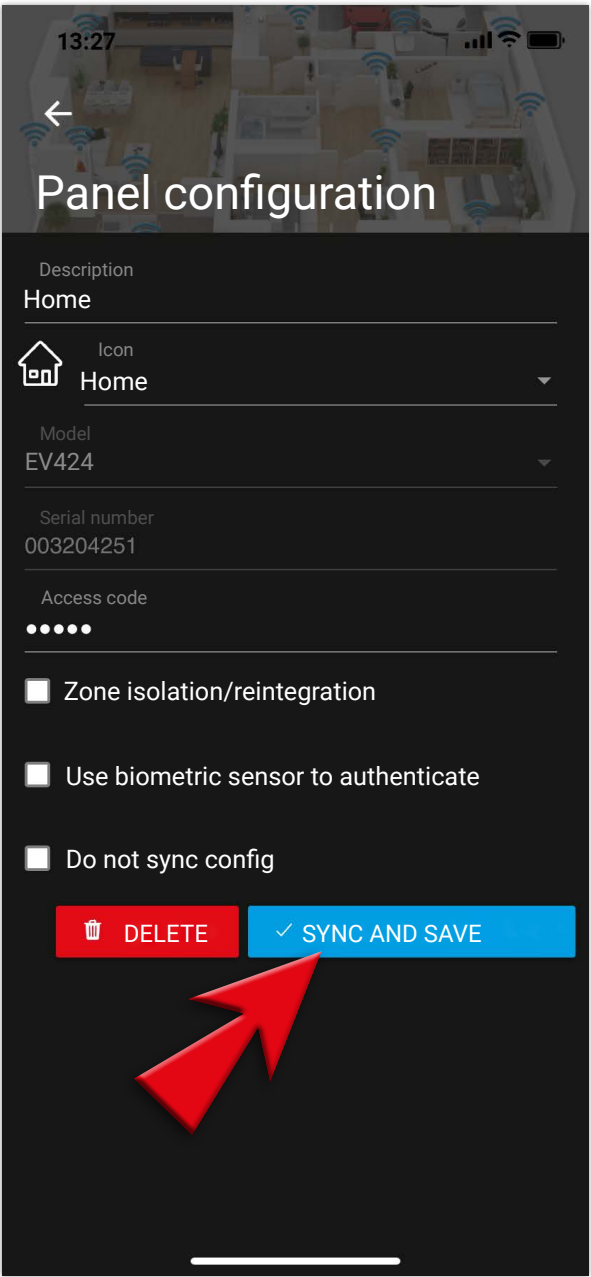


7 - Insert the access code and tap OK

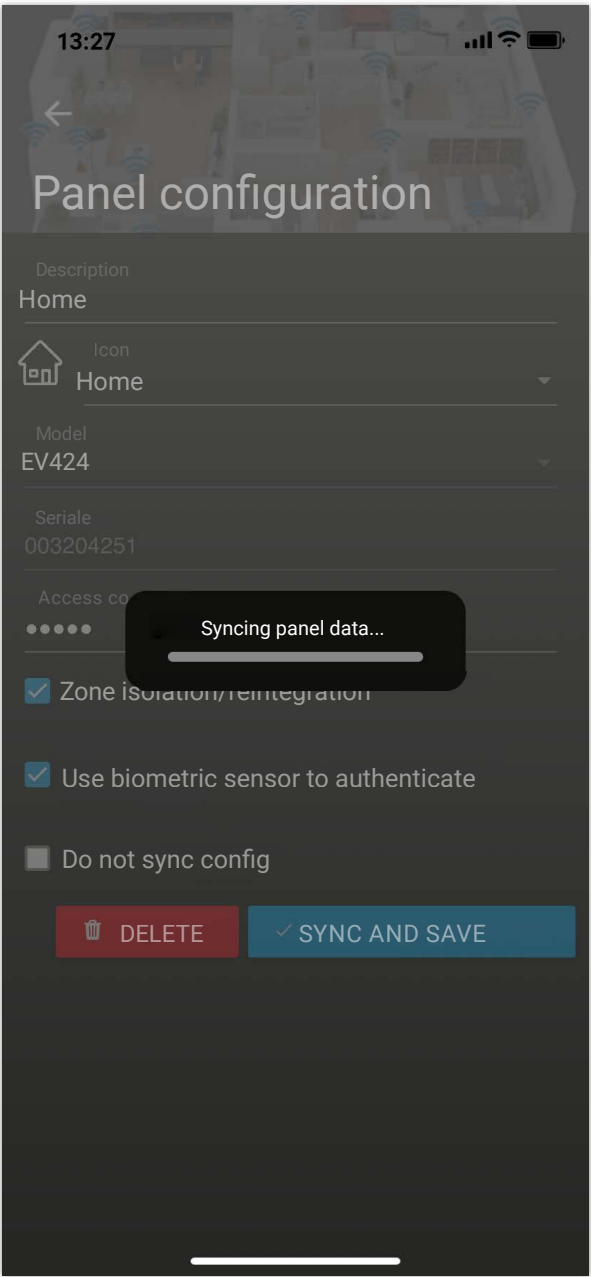


LOGIN procedure

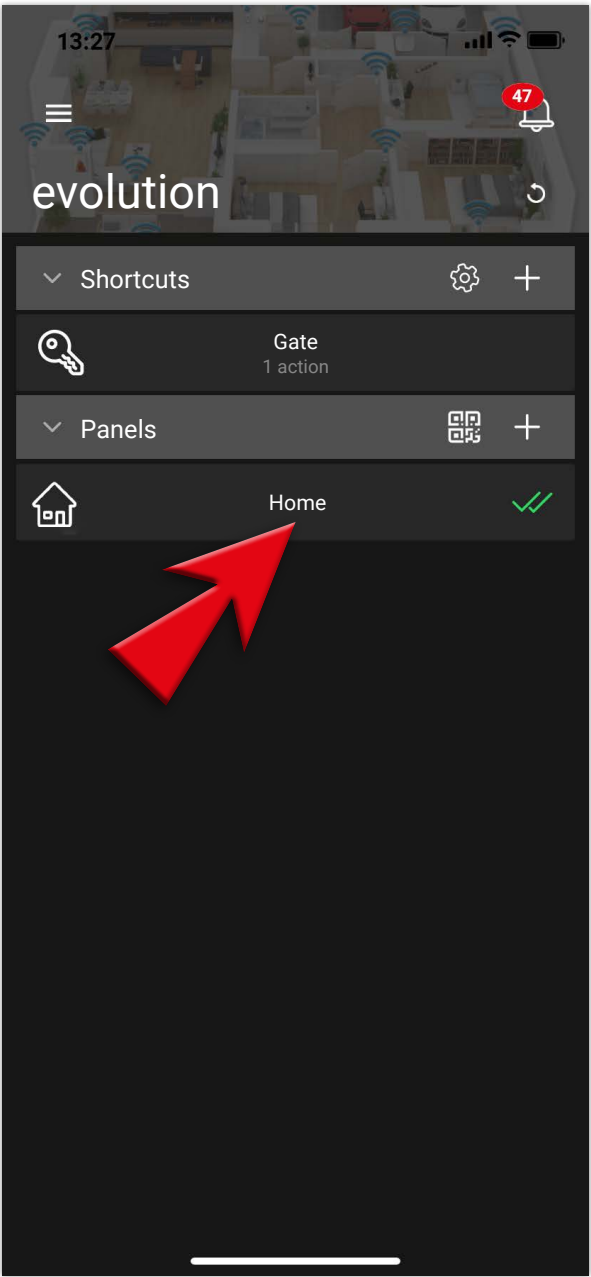
8 - Choose the options required and tap on SYNC AND SAVE



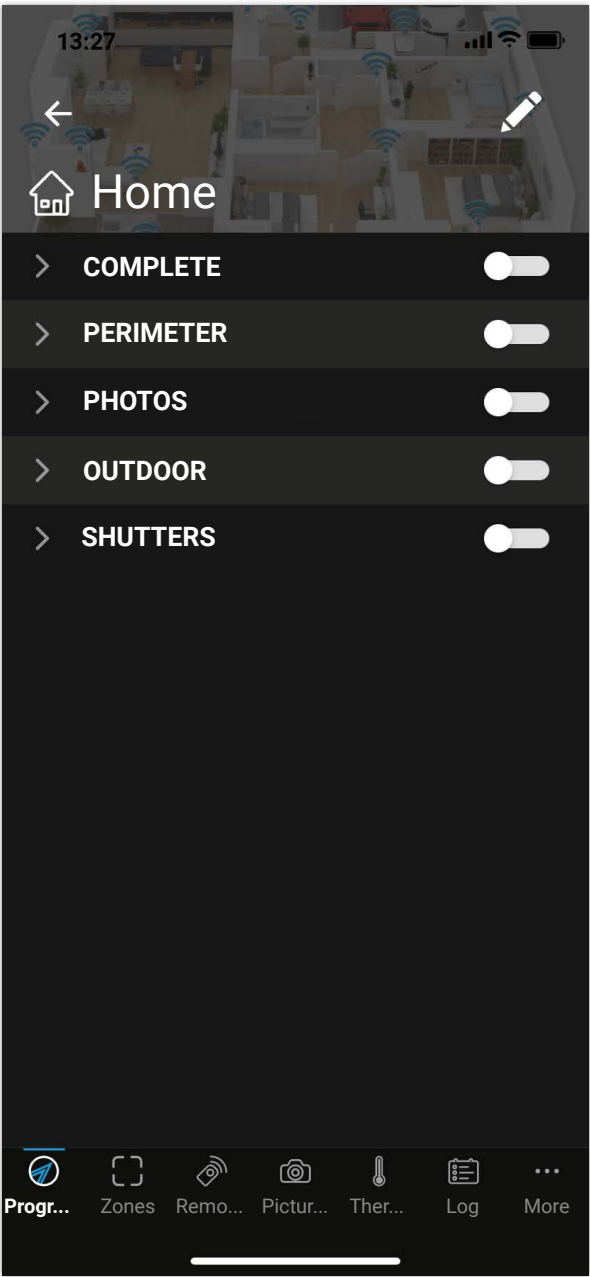
9 - Wait till the end of this operation



10 - Tap on the control panel



11 - Check the correct operation





Manual configuration of the control panel

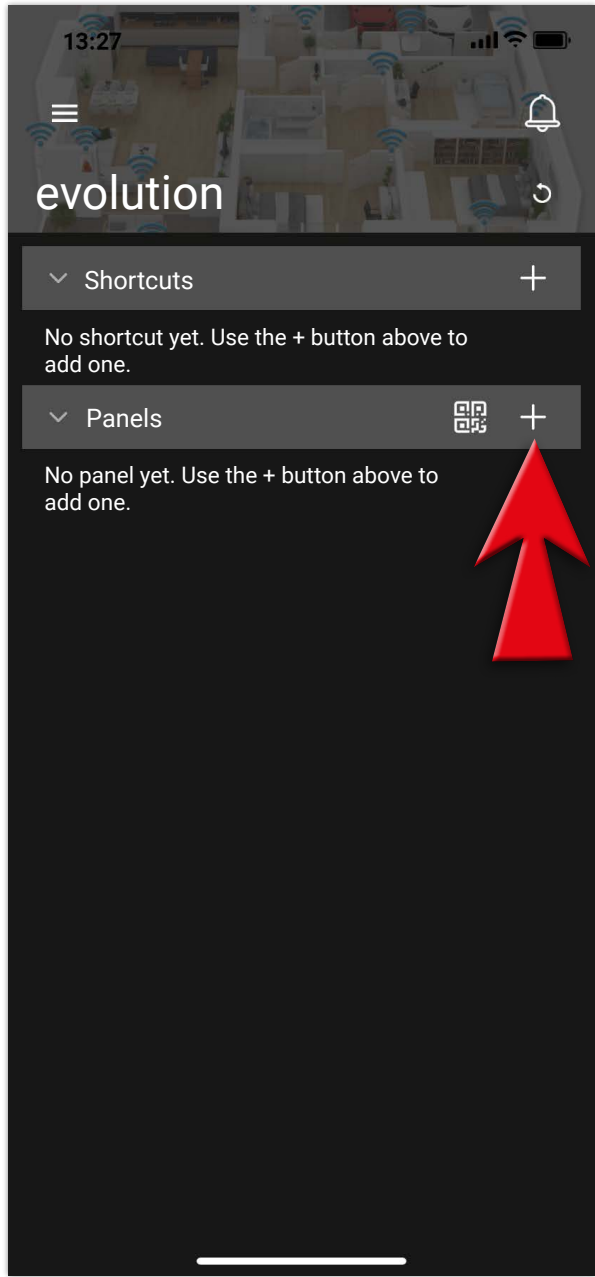


evolution

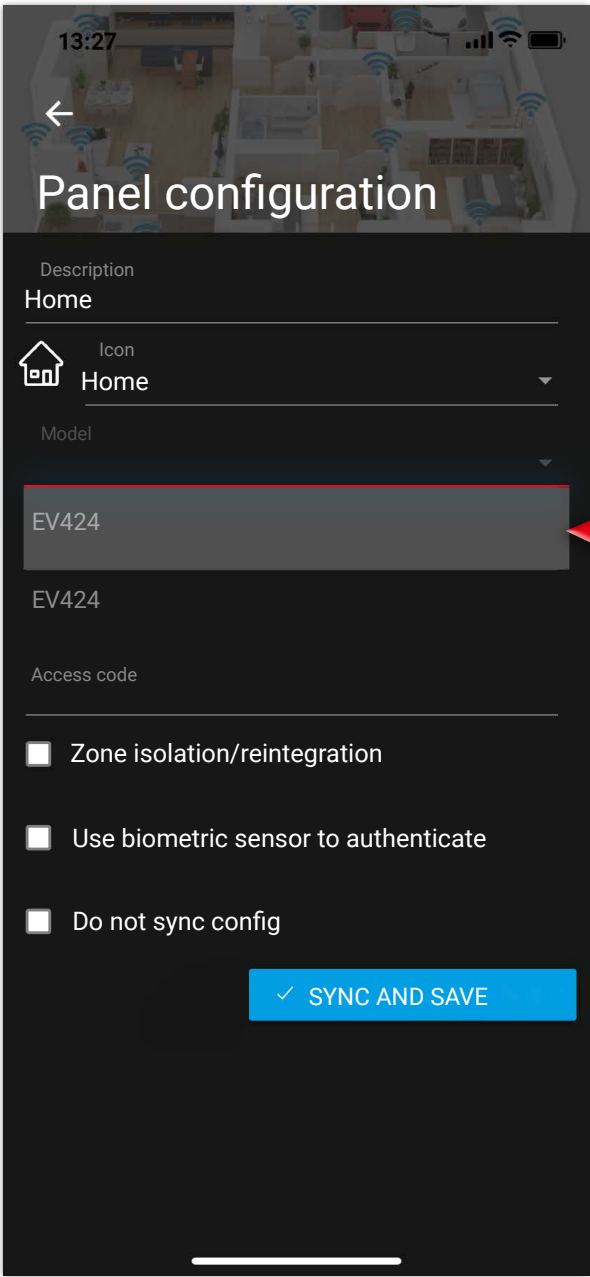
**Necessary data:
model and serial number of the control panel**

Manual configuration of the control panel

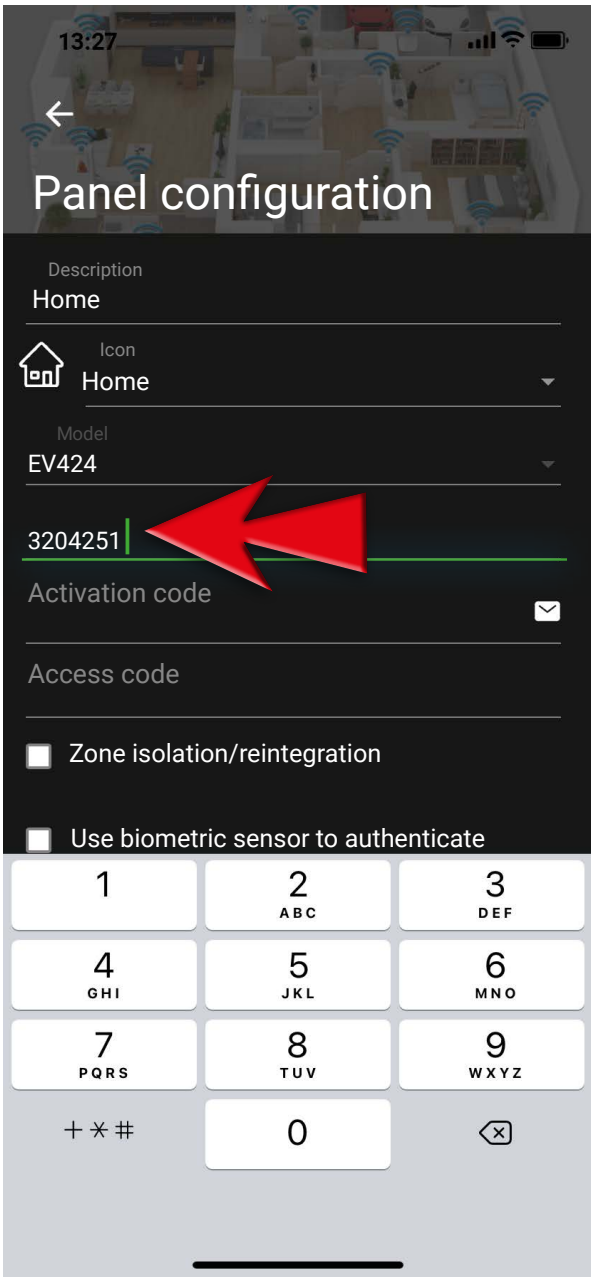
1 - Tap on +
to add a control panel



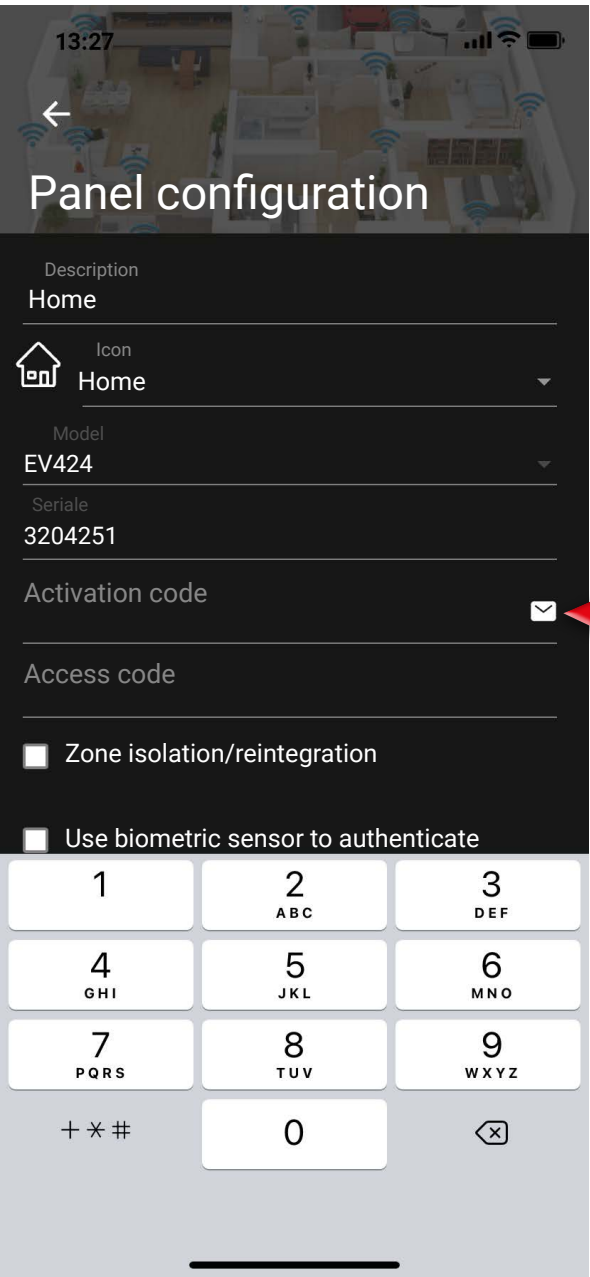
2 - Select the model
of your control panel



3 - Enter the serial number
of your control panel

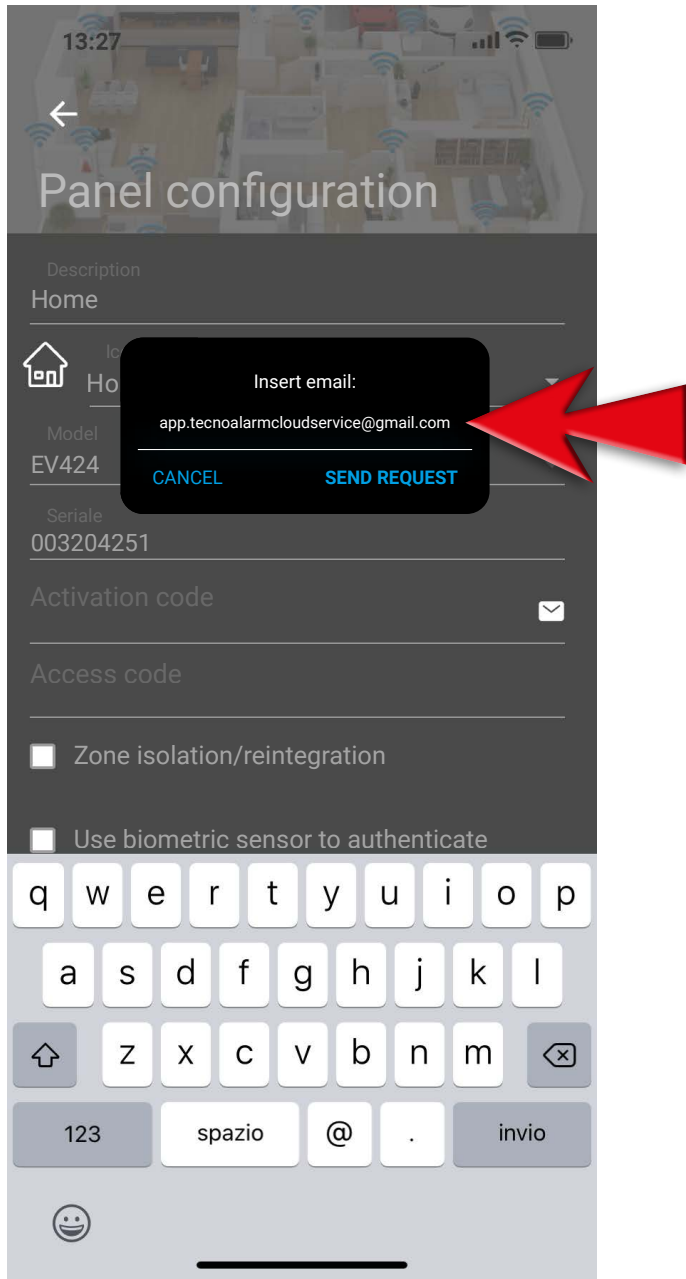


4 - To require
the activation code
of the app tap
on the envelope

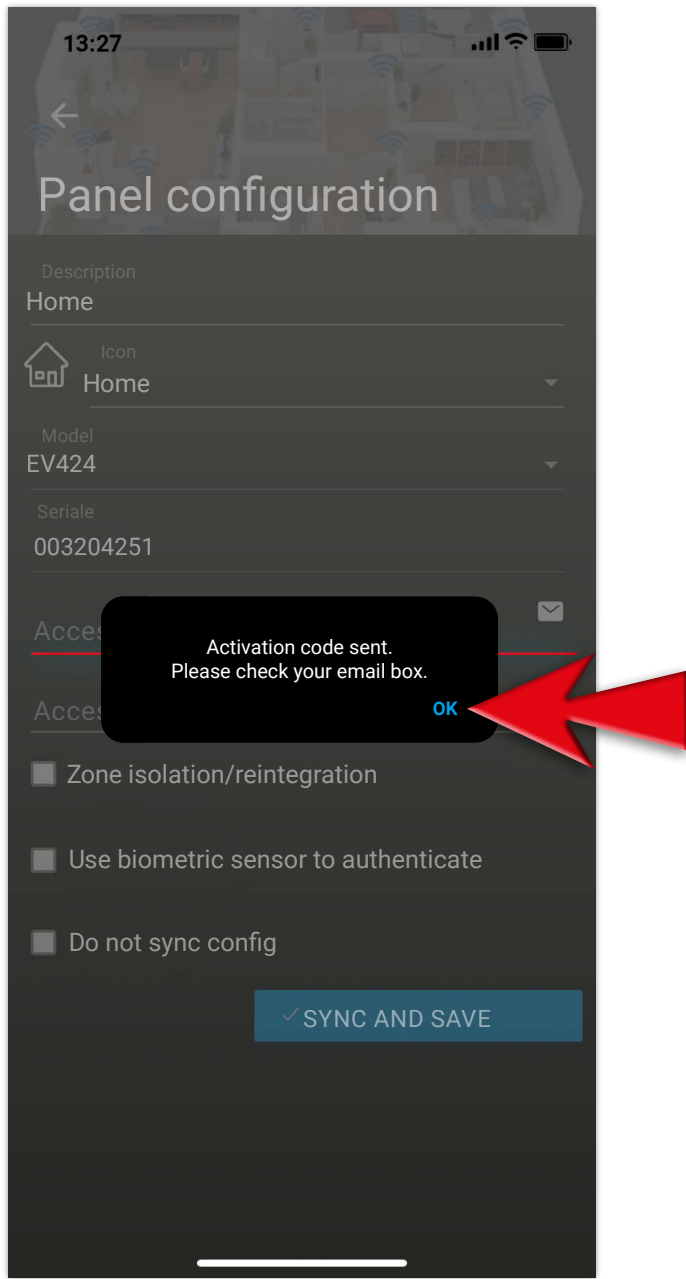


Manual configuration of the control panel

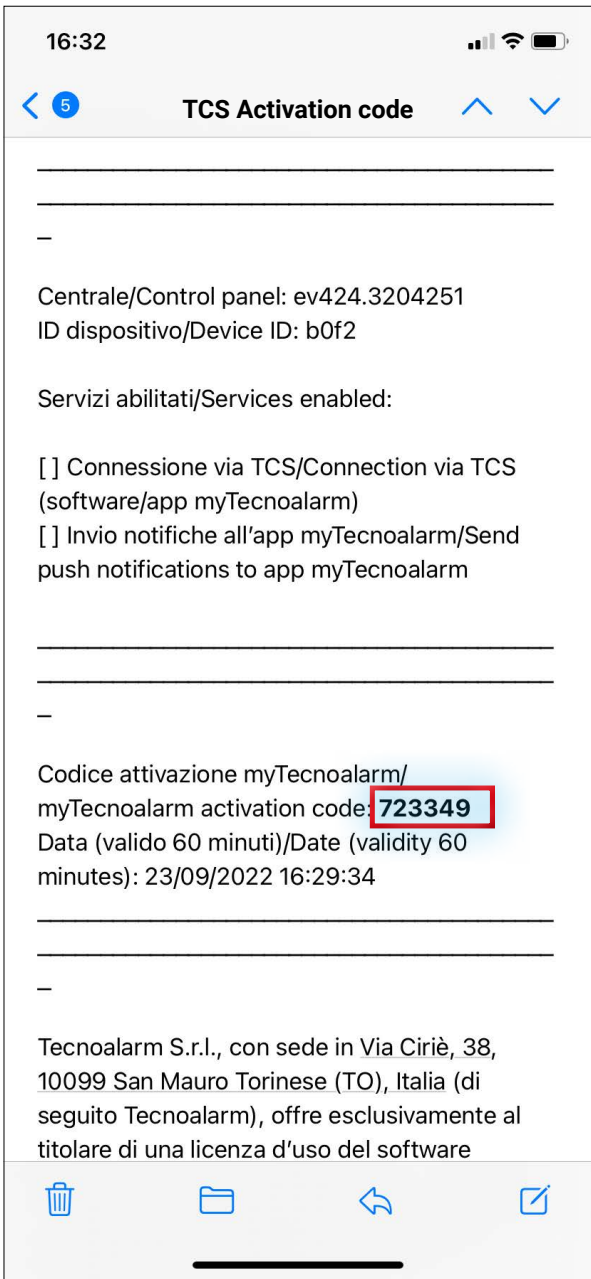
5 - Enter the e-mail address where you have received this communication and tap on SEND REQUEST



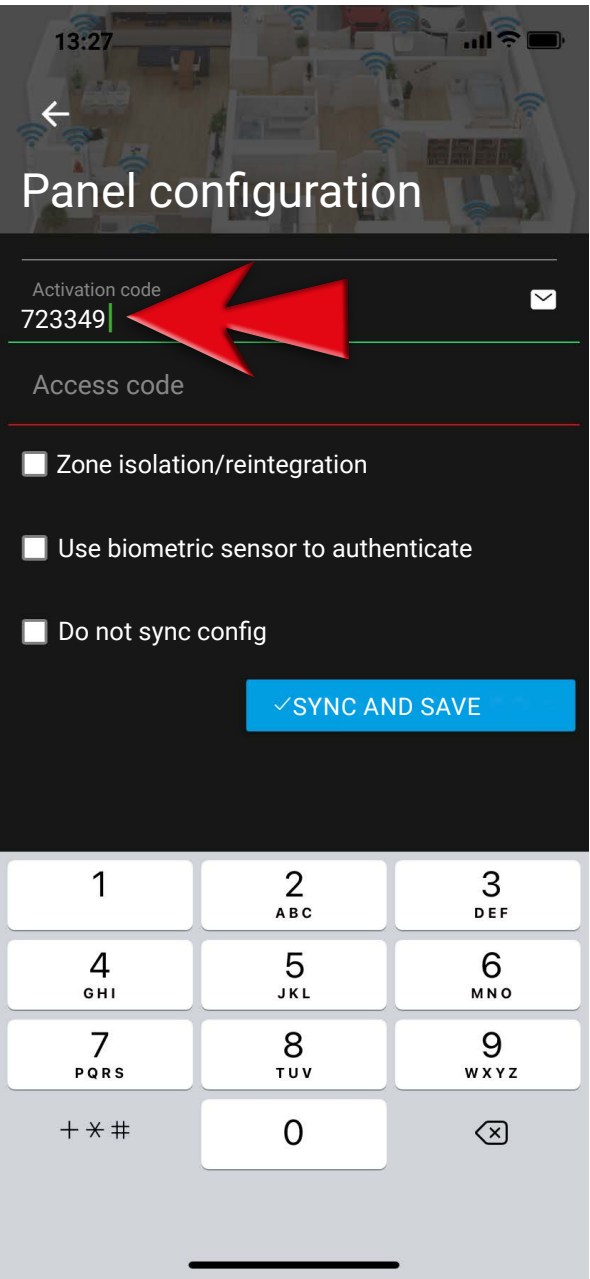
6 - Activation code sent, confirm with OK and access your e-mail account



7 - Copy the activation code present in the e-mail
N.B. If you do not find the e-mail check the spam folder

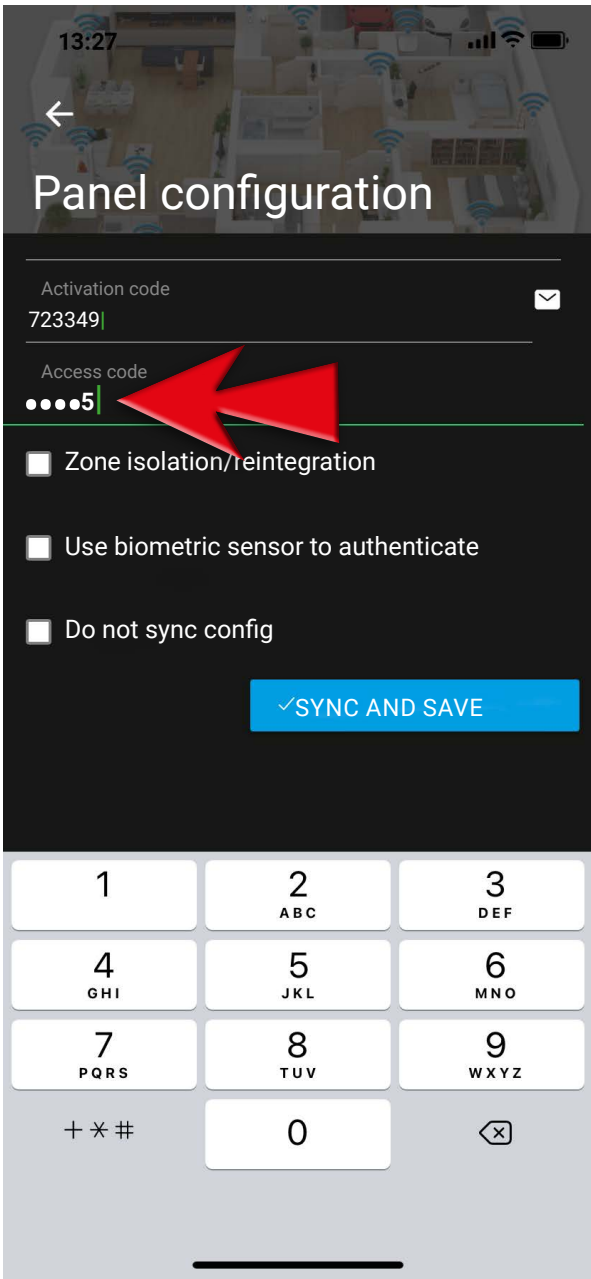


8 - Paste the activation code

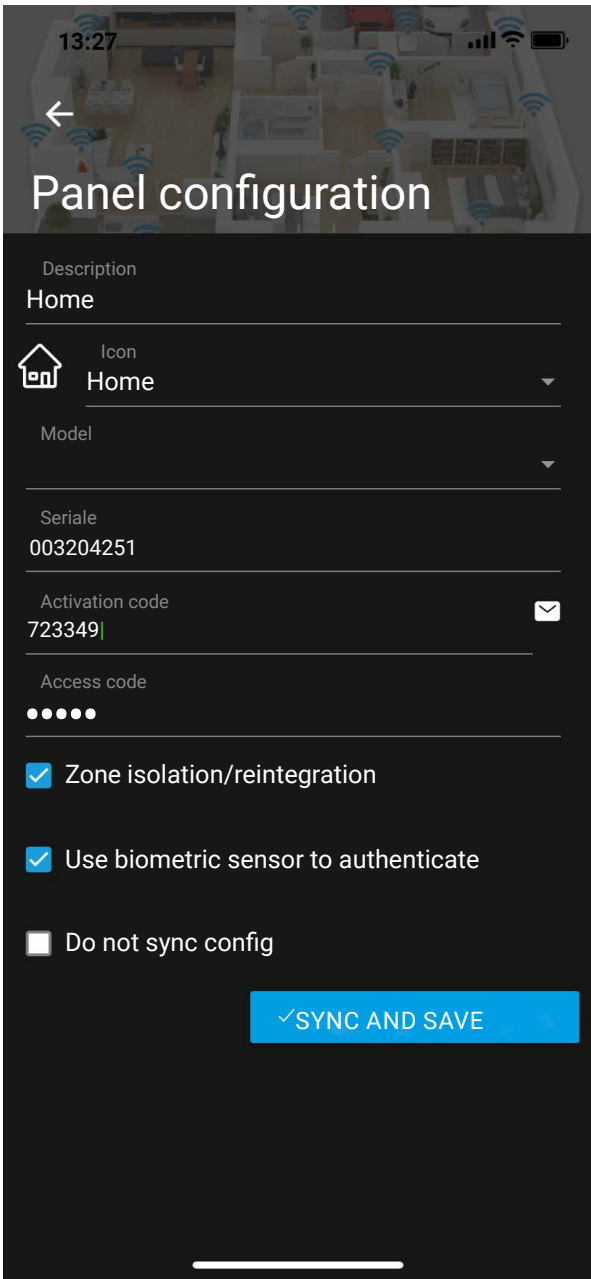


Manual configuration of the control panel

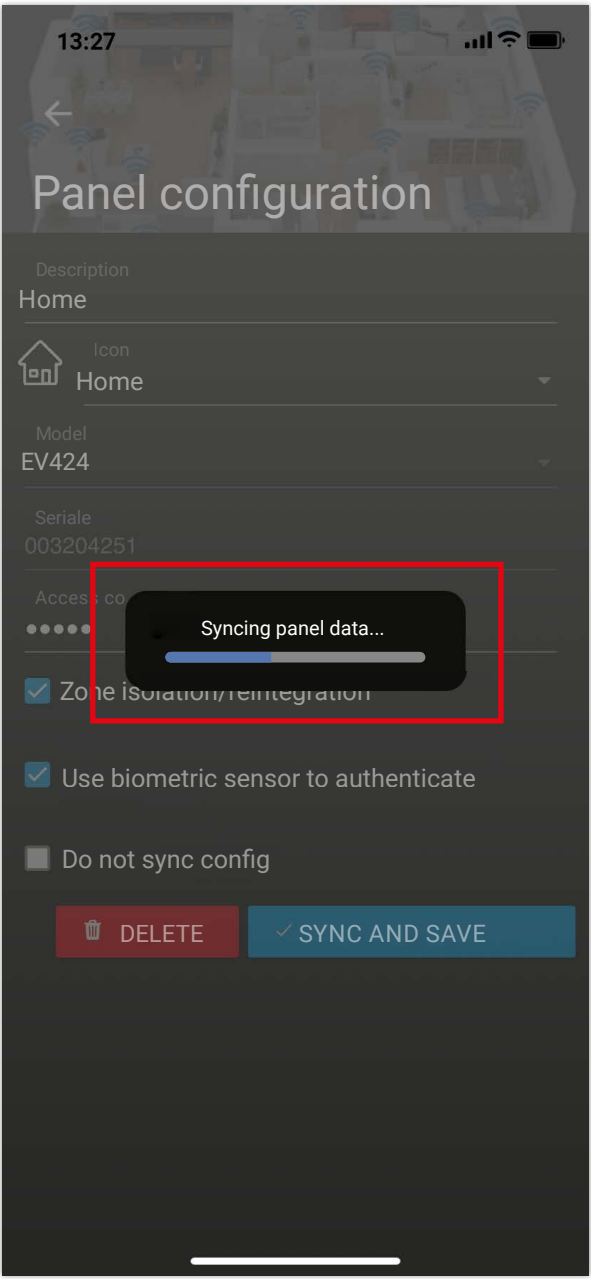
9 - Enter the access code
(used to arm/disarm
the control panel
on the console)



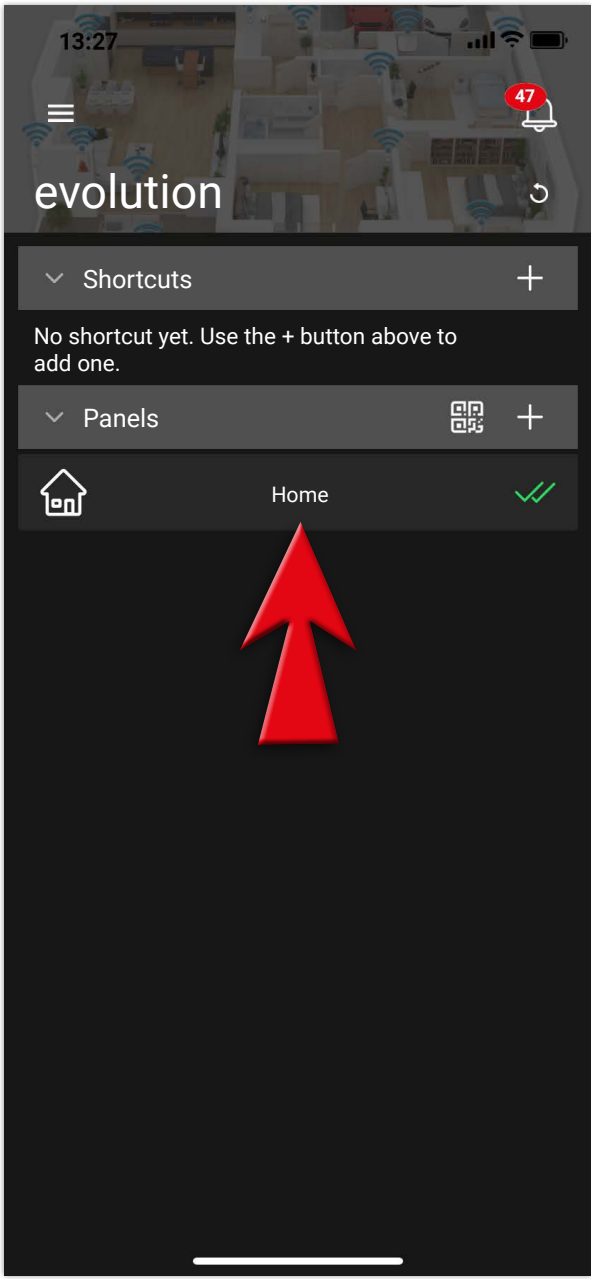
10 - Tap on
SAVE AND SYNC



11 - Wait until
the synchronization
of the app with
control panel has been
completed



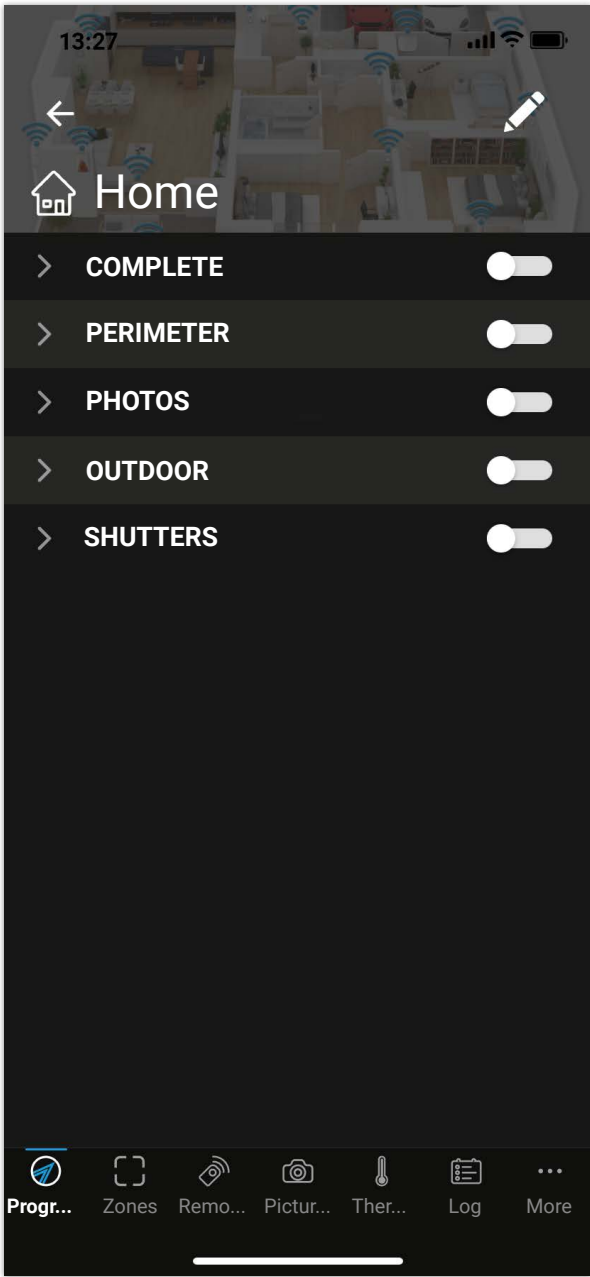
12 - Procedure completed
successfully,
control panel configuration
recovered



Manual configuration of the control panel

13 - Verify
the correct operation

In case of errors
or difficulties during the execution
of the procedures
contact your installer
for advanced technical support.



Configuration control panel with QR code



FRAME THE QR CODE WITH YOUR DEVICE



www.tecnalarm.com