

TP4-20 - TP4-20 GSM

Expandable serial alarm system



The TP4-20 and TP4-20 GSM alarm systems combine the Tecnoalarm philosophy and technology offering the best cost/performance ratio. They have been especially designed for the protection of small and medium-sized sites.

Tecnoalarm
Hi-Tech Security Systems
design by *pininfarina*

The TP4-20 and TP4-20 GSM systems are complete with all features: a telephone section which permits monitoring of the events using the most modern communication vectors, the verification of the active alarms thanks to RDV technology (international patent) and easy interaction with the system through a guided voice menu. The systems can be totally controlled from a distance, via telephone line, for maintenance and technical assistance.



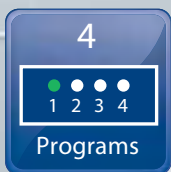
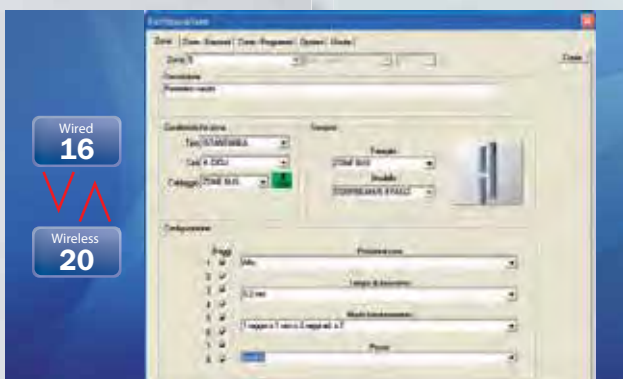
Programming

Programming of the systems' functioning parameters can be made locally or remotely, via telephone line, using the Tecnoalarm software. The software provides numerous programming tools which permit customization of the installation selecting the most appropriate settings among the options available.



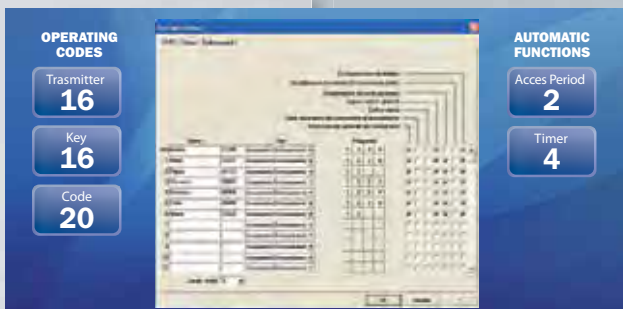
Zones

System configuration is entirely modular thanks to the input expansion modules. The 4 hard-wired inputs of the CPU constitute the basic version of the system. They are expandable to a total of 20 zones which can be freely associated to the hard-wired and wireless inputs (up to 16 hard-wired zones and 20 wireless zones). The zone programming facilities allow to obtain excellent performances even from traditional detectors but the best results are obtained by using the Tecnoalarm RDV detectors. The RDV detectors permit the verification and analysis of the alarms at the very moment they are released through the specific diagnostic tools of the monitoring software. In this way, the limitations of traditional remote management have been overcome and a new concept of interaction has been proposed (RDV® is a registered trademark and protected by international patent).



Programs and control units

The TP4-20 and TP4-20 GSM systems manage 4 programs. A wide range of control units, composed of LED consoles, LCD consoles, transponders and wireless keys, is able to satisfy any application requirements. The users have access to the system's functions through 20 codes, 16 transponders and 16 wireless keys. Access to the protected areas can be automated and regulated by 2 access periods and 4 timers.



OPERATING CODES

Trasmitter **16**

Key **16**

Code **20**

AUTOMATIC FUNCTIONS

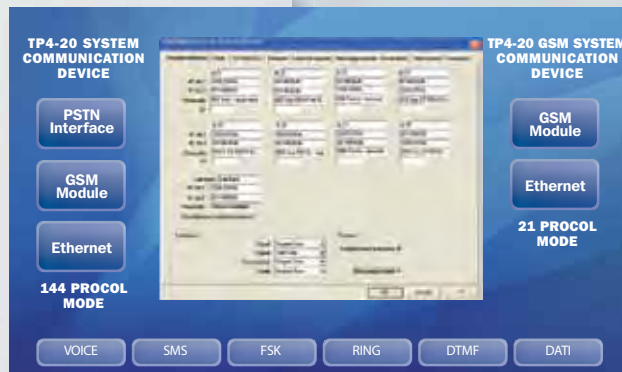
Access Period **2**

Timer **4**



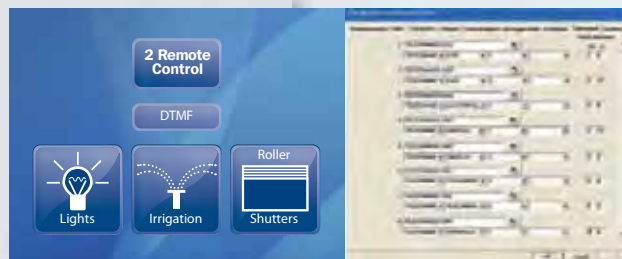
Telephone section

The telephone section provides 8 telephone channels. The TP4-20 system uses normally the PSTN line and optionally the GSM or Ethernet network through respectively the external GSM communicator TECNOCELL-PRO PL and the PROG NET2 Ethernet interface. The TP4-20 GSM system uses normally the GSM network and optionally the Ethernet network through the PROG NET2 Ethernet interface. According to the system, TP4-20 or TP4-20 GSM and the vector, the telephone section uses several communication formats: voice calls, SMS, data transmission in FSK, DTMF and TCP/IP formats. The alarm and system status messages are automatically composed by the system using the onboard vocabulary. The TP4-20 and TP4-20 GSM systems are able to communicate with the user and the central monitoring stations using respectively 144 and 21 communication protocols.



Interaction

The TP4-20 and TP4-20 GSM systems provide 2 remote controls which allow the user to interact with the system through telephone calls. The remote controls are customizable and permit the management of the system's functions as well as the interaction with external devices such as heating, air-conditioning, lighting equipment etc.



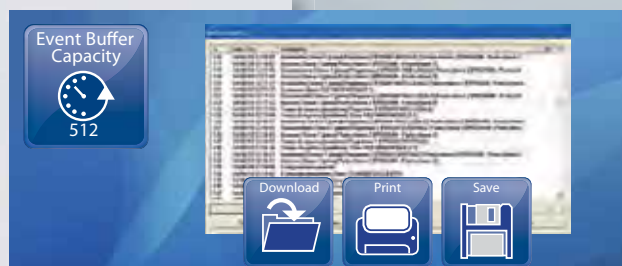
Wireless section

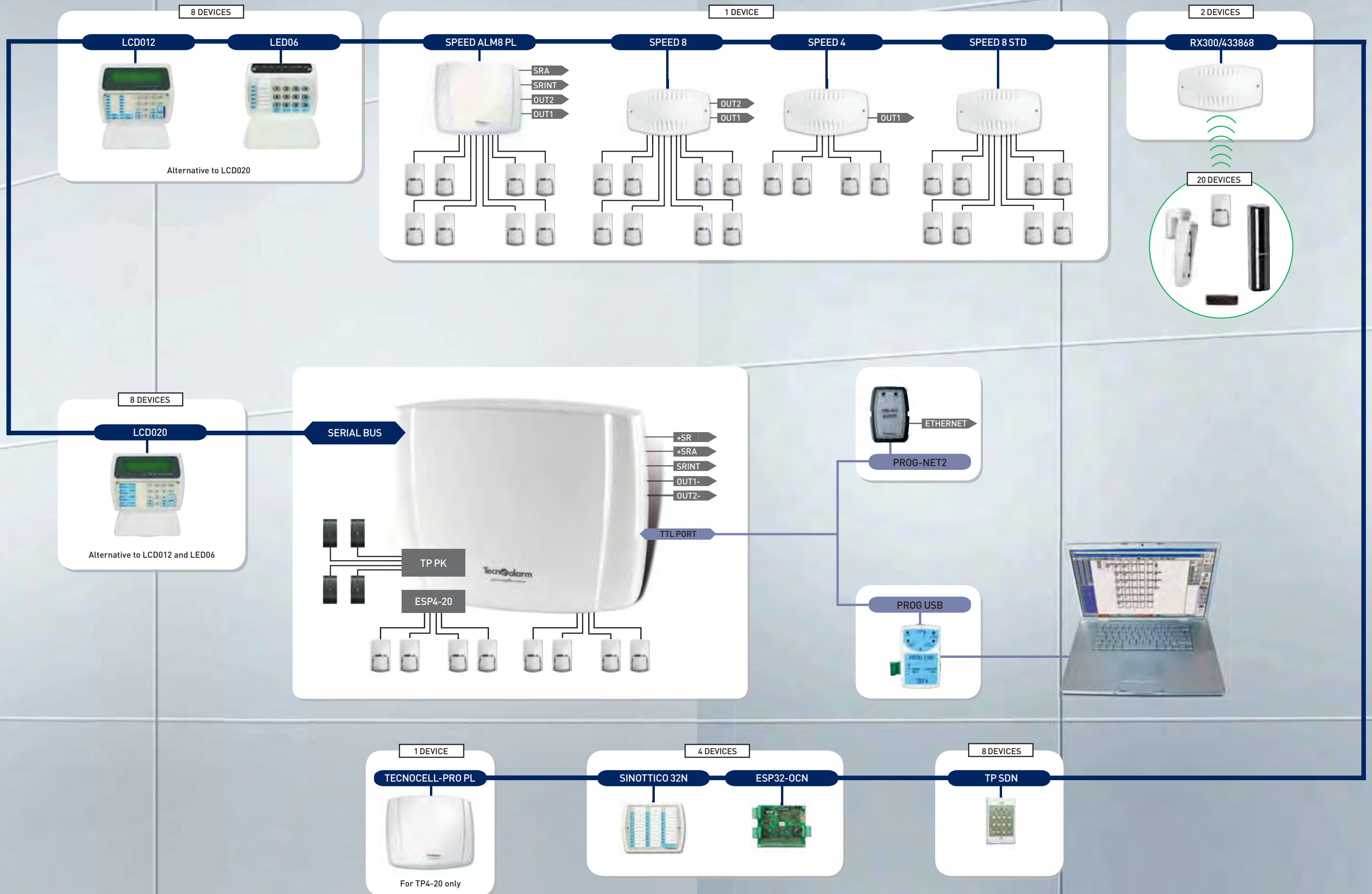
The expansion of the system is possible, even if cable laying is complicated, by the installation of maximum 2 wireless receivers able to manage a total of 16 wireless keys and 20 wireless detectors. The wide range of Tecnoalarm wireless detectors, comprising indoor and outdoor detectors as well as perimeter protections, offers ideal solutions for all protection requirements.



Event log

The event log contains all the events relating to the system's functioning, i.e. the alarms, the diagnostics and the changes of status. A maximum of 512 events can be recorded, in reverse chronological order, with indication of date and time. For each event, detailed information is given about the interested zones, programs and remote controls, identified by a number and a description, as well as the telephone calls. The installer can download the event log at any time using the Tecnoalarm software to extract the necessary information to verify the system's smooth functioning.





TECHNICAL SPECIFICATION OF SERIAL BUS EXPANSIONS

Input expansions



	SPEED ALM8 PL	SPEED8	SPEED 4	SPEED 8 STD
POWER SUPPLY	1,8A			
ZONES	8	8	4	8
OUTPUTS	4	2	1	
ZONE BUS	✓	✓	✓	
CASING	✓	optional	optional	optional
CODE	F101SPEEDALM8PL	F101SPEED8	F101SPEED4	F101SPEED8STD

Consoles



	LCD020	LCD012	LED06
CODES	✓	✓	✓
PROGRAMMING MENU	✓	✓	
PROGRAMS	4	4	4
ZONES	20	12	6
DISPLAY	2x16 characters	2x16 characters	
SIGNALING LED	18	21	14
CODE	F127LCD020	F127LCD012	F127LED06

Electronic keypad



	TP SDN
CODES	✓
PROGRAMS	4
SIGNALING LED	7
CODE	F127TPSDN

Output expansions



	ESP32-OCN	SINOTTICO 32N
OUTPUTS	32 programmable open collectors	
SIGNALING LED		32 programmable LED
CASING	optional	✓
CODE	F127ESP32OCN	F127SINOTTICON

Wireless expansions



	RX300/433868
RECEIVER	✓
RX FREQUENCY	433MHz/868MHz
CASING	✓
CODE	F102RX300

GSM

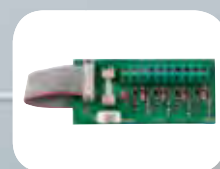


	TECNOCELL-PRO PL
FUNCTION	secondary/backup
VOICE MESSAGES	✓
SMS MESSAGES	✓
PROTOCOLS	✓
BACKUP	✓
CODE	F104TECNOCELL/PPL

For TP4-20 only

Technical specifications of internal expansions

Internal input expansion

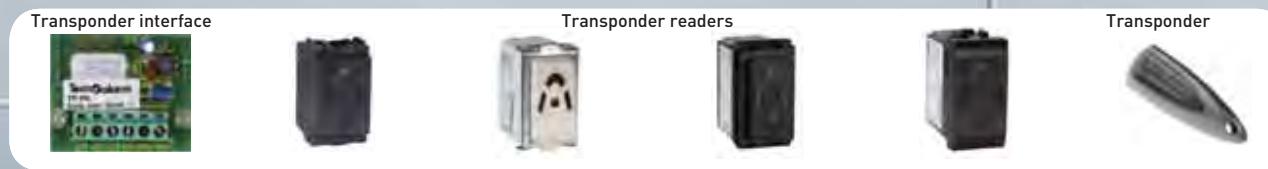


	ESP4-20
ZONES	4
ZONE BUS	all
ZONE BUS	the first 2
CODE	F127TP420ESP

Voice message software module

	VOCABOLARIO
CODE	F127TP420VOC

Secondary control units



	TP PK	ATPROX/I	ATPROX/M	ATPROX/L	ATPROX/LINT	PROXKEY
COMPATIBILITY		VIMAR Idea®	bticino Magic®	bticino Living®	bticino Living International®	
PROGRAMS		3	3	3	3	
SIGNALING LED		4	4	4	4	
CODE	F127TP6PK	F103ATPROX/I	F103ATPROX/M	F103ATPROX/L	F103ATPROX/LINT	F103PROXKEY

TECHNICAL AND FUNCTIONAL SPECIFICATIONS

ZONES	CPU hard-wired zones	4	TELEPHONE SECTION TP4-20 GSM	Channels	8	
	Total hard-wired zones	16		Primary vector	GSM	
	Total wireless zones	20		Secondary vector (optional)	Ethernet	
OUTPUTS	CPU outputs	3 + 2 programmable		Transmittable events	79	
	INTERNAL EXPANSIONS	Hard-wired input expansion		ESP4-20	Telephone number length	16 digits
Transponder interface		TP PK		Call event queue	16	
SYSTEM FEATURES	RS485 serial bus	1		Communication protocols	21	
	Event buffer capacity	512		SERIAL BUS EXPANSIONS	Hard-wired input expansions	1
PROGRAMS ACCESS MANAGEMENT	Programs	4			Wireless expansions	2
	Access codes	20			Consoles	8
	Transponders	16	Secondary control units		4	
	Wireless keys	16	Output expansions		4	
AUTOMATION	Timers	4	GSM telephone communicator (TP4-20)	1		
	Access periods	2	ELECTRICAL SPECIFICATIONS	Operating voltage	230V AC +/-10% 50Hz	
	Remote controls	2		CPU board consumption TP4-20	145mA @ 13.8VDC	
	Test call	✓		CPU board consumption TP4-20 GSM	130mA @ 13.8VDC	
	Server test call	✓		Power supply	1.1A @ 14.8V DC	
TELEPHONE SECTION TP4-20	Channels	8		Battery	12V/7Ah	
	Primary vector	PSTN	PHYSICAL SPECIFICATIONS	Casing	ABS	
	Secondary vector (optional)	GSM		Dimensions (LxHxD)	350x285x93mm	
	Secondary vector (optional)	Ethernet		Weight (without battery) TP4-20	2.6kg	
	Transmittable events	86		Weight (without battery) TP4-20 GSM	2.7kg	
	Telephone number length	16 digits		CONFORMITY	R&TTE 1999/05/EC	
	Call event queue	16				
	Communication protocols	144				

CONTROL PANEL VERSIONS		Language	PSTN	GSM	Power	ABS
		Vocabulary	Interface	Module	Supply	Box
TP4-20	For the item numbers please contact the reseller		✓		1.1A	✓
TP4-20/V		✓	✓		1.1A	✓
TP4-20 GSM/V		✓		✓	1.1A	✓

All specifications listed in this brochure are subject to change without notice.



Tecnalarm

Via Ciriè, 38 - 10099 San Mauro T.se - Torino (Italy)
tel. +390112235410 - fax +390112735590
tecnalarm@tecnalarm.com
www.tecnalarm.com

Tecnalarm FRANCE

495, Rue Antoine Pinay - 69740 Genas - Lyon (France)
tél. +33478406525 - fax +33478406746
tecnalarm.france@tecnalarm.com - www.tecnalarm.com
Agence de Paris: 125, Rue Louis Roche - 92230 Gennevilliers

Tecnalarm ESPAÑA

c/Vapor 18 (Pol. Ind. El Regas)
08850 Gavà - Barcelona (España)
tel. +34936622417
tecnalarm@tecnalarm.es - www.tecnalarm.es